



Fisheries and Oceans
Canada

Pêches et Océans
Canada

Canadian
Coast Guard

Garde côtière
canadienne

Notices to Mariners

Edition No. 07/2025
July 25, 2025



Safety First, Service Always

Monthly Western Edition

Canada 

Notices to Mariners – Monthly Western Edition
Edition No. 07/2025

Aussi disponible en français :
Avis aux navigateurs – Édition mensuelle de l'Ouest
Édition n° 07/2025

Published under the Authority of:

Canadian Coast Guard Programs
Aids to Navigation and Waterways
Fisheries and Oceans Canada
Montreal, QC H2Y 2E7

For more information, contact DFO.Notmar-Notmar.MPO@dfo-mpo.gc.ca.

© His Majesty the King in Right of Canada,
as represented by the Minister of Fisheries, Oceans
and the Canadian Coast Guard, 2025.

Cat. No. Fs152-9E-PDF (Electronic PDF, English)
ISSN 2817-0253

Cat. No. Fs152-9F-PDF (Electronic PDF, French)
ISSN 2817-0261

A web version is available here:

[Notices to Mariners – Monthly Editions](#) (English)

[Avis aux navigateurs – Publications mensuelles](#) (French)

Explanatory Notes – Notices to Mariners (NOTMAR)

Geographical positions refer directly to the graduations of the largest scale Canadian Hydrographic Service chart (unless otherwise indicated).

Bearings refer to the true compass and are measured clockwise from 000° (North) clockwise to 359°; those relating to lights are from seaward.

Visibility of lights is that in clear weather.

Depths - The units used for soundings (metres, fathoms or feet) are stated in the title of each chart.

Elevations are normally given above Higher High Water, Large Tide (unless otherwise indicated).

Distances may be calculated as follows:

- 1 nautical mile = 1,852 metres (6,076.1 feet)
- 1 statute mile = 1,609.3 metres (5,280 feet)
- 1 metre = 3.28 feet

Temporary and Preliminary Notices to Mariners – Section 1A of *Notices to Mariners*

These notices are indicated by a (T) or a (P), respectively. Please note that nautical charts are not amended by the Canadian Hydrographic Service for temporary (T) and preliminary (P) notices. It is recommended that mariners chart these corrections in pencil. For the list of charts affected by (T) & (P) notices, please refer to the current [Notices to Mariners - Monthly Summary of Temporary and Preliminary Notices](#) publication.

Suggestions and Corrections Form

This form is specifically for suggestions and corrections to Notices to Mariners publications. It is available [online](#) and also in [fillable PDF format](#) included with the monthly publication ZIP file.

To submit comments and suggestions on possible improvements to the various publications and services: DFO.Notmar-Notmar.MPO@dfo-mpo.gc.ca.

To report chart discrepancies and/or corrections to the *Canadian Sailing Directions* booklets: Fill out the [Marine Information Reporting Form](#) and/or email chsinfo@dfo-mpo.gc.ca.

To report emergencies or navigational hazards: [Contact your nearest MCTS centre](#)

- VHF channel 16 (156.8 MHz)
- MF/HF frequency 2182 kHz/4125 kHz (where available)
- *16 on a cellphone (where available)

NOTMAR Website – Monthly Editions, Chart Corrections and Chart Patches

The NOTMAR website allows users to access the [monthly publications](#), [chart corrections](#), and [chart patches](#).

Users can subscribe for free to the [email notification service](#) to receive notifications when charts of interest are updated, including their patches, as well as when a new Monthly Edition of *Notices to Mariners* is published.

In addition, the monthly publication and related files to download, such as chart patches, can be obtained all together through the download of a single ZIP file.

Explanatory Notes – Canadian Hydrographic Service (CHS)

Chart Corrections – Section 2 of *Notices to Mariners*

Corrections to nautical charts will be listed in numerical order by chart number. Each chart correction listed applies only to that particular chart. Related charts, if any, will have their own specific correction listed separately.

Users should also refer to CHS *Chart 1: Symbols, Abbreviations and Terms* for additional information pertaining to the correction of charts.

The illustration below describes the elements that will comprise a typical Section 2 chart correction:

| | | | | | |
|---------------------------------------|--------------|---|-------------------------------|-------------------------------------|-------------------|
| | Chart Number | Chart Title | Chart latest new edition date | Horizontal Chart Datum | Last Correction |
| Weekly Chart Correction Date | 1312 | Lac Saint-Pierre - New Edition - 10-MAY-2019 - NAD 1983 | | | |
| | 05-AUG-2022 | | | | LN/D. 24-SEP-2021 |
| | Amend | | | 46°03'32.4"N 073°03'21.6"W | |
| | | (See Chart 1 P16) | | (Q2022035) LL(2177) DFO(6410690-01) | |
| | Chart Action | Chart 1 Reference No. | CCG Reference No. | List of Lights No. | CHS Reference No. |

The last correction number is identified with the **LN/D** or **Last Notice to Mariners Number / Date**.

Mariners are advised that only the most critical changes that directly affect safety to navigation are issued in "Section 2 – Chart Corrections." This limitation is required to ensure that charts remain as clear and easy to read as possible. As a result, mariners may see minor discrepancies of a non-critical nature between information in official publications. For example, a small change in the nominal range or focal height of a light may not result in the production of a chart correction in *Notices to Mariners*, but may result in a correction in the [List of Lights, Buoys and Fog Signals](#) publication.

Note: In the case of a discrepancy between information provided on CHS charts relating to aids to navigation, and the *List of Lights, Buoys and Fog Signals* publication, the latter shall be deemed as containing the most up-to-date information.

Explanatory Notes – Marine Communications and Traffic Services (MCTS)

Navigational Warnings / Notices to Shipping

The Canadian Coast Guard (CCG) is implementing a number of changes to the aids to navigation system in Canada.

These changes are advertised as Navigational Warnings, formerly called Notices to Shipping¹, that are broadcast by the CCG, and are then followed up with Notices to Mariners, then charts are updated by hand correction, reprints or new editions.

Mariners are advised that all relevant Navigational Warnings (NAVWARN) should be kept until superseded by Notices to Mariners or through revised charts issued by the Canadian Hydrographic Service (CHS).

NAVWARN are accessible on the applicable regional page on the [CCG Navigational Warnings](#).

CHS is reviewing the impact of these changes with CCG and together are preparing an action plan on the issuing of chart revisions.

For further information, contact your regional NAVWARN Issuing Desk.

| | |
|--|---|
| Western Region Prince Rupert MCTS Centre “P” Series NAVWARN Canadian Coast Guard Bag 4444 Prince Rupert, BC V8J 4K2 Telephone: 250-627-3070 Email: NAVWARN.MCTSPrinceRupert@innav.gc.ca | Arctic Region *Iqaluit MCTS Centre <i>Operational from approximately mid-May until late December.</i> “A” Series NAVWARN Canadian Coast Guard P.O. Box 189 Iqaluit, NU X0A 0H0 Telephone: 867-979-5269 Facsimile: 867-979-4264 Email: NAVWARN.MCTSIqaluit@innav.gc.ca |
|--|---|

*Service available in English and in French.

¹ The expression “Notice to Shipping” was changed to “Navigational Warning” in January 2019.

Table of Contents

| | |
|--|-----------|
| Section 1: General and Safety Information | 1 |
| *505/23 Canadian Hydrographic Service – Magnetic Declination Calculations | 1 |
| *1207/23 Canadian Hydrographic Service – Inappropriate Geographical Names Review Process | 1 |
| *208/24 West Coast Haida Gwaii – Voluntary Protection Zone for Shipping | 1 |
| *1105/24 Transport Canada – British Columbia North Coast Waterway Management Guidelines | 2 |
| *506/25 Anguniaqvia Niqiyuam Marine Protected Areas (ANMPA), Tarium Niryutait Marine Protected Areas (TNMPA) and Beluga and Bowhead Whale Protection: Voluntary Avoidance and Slowdown Areas | 4 |
| *519(P)/25 Scott Islands – Paper Chart to be Discontinued | 7 |
| *701/25 Canadian Hydrographic Service – Nautical Charts | 7 |
| *702/25 Canadian Hydrographic Service – Electronic Navigational Charts | 7 |
| *703/25 Transport Canada - Ship Safety Bulletins #10, #11, #12 and #13/2025 | 10 |
| *706/25 Plans - Prince Rupert Harbour – Unlit Buoy Repositioned | 10 |
| Section 1A: Temporary and Preliminary Notices | 11 |
| Reminder – Comment Period for Active Preliminary Notices | 11 |
| Section 2: Chart Corrections | 12 |
| Section 3: Radio Aids to Marine Navigation Corrections | 36 |
| *714/25 Radio Aids to Marine Navigation 2025 (Atlantic, St. Lawrence, Great Lakes, Lake Winnipeg, Arctic and Pacific) | 36 |
| Section 4: Canadian Sailing Directions Corrections | 37 |
| Section 5: List of Lights, Buoys and Fog Signals Corrections | 38 |

Numerical Index of Canadian Charts Affected

This numerical index lists all nautical charts mentioned in this monthly edition of Notices to Mariners. Only charts appearing in Section 2 of this publication require a chart correction. The appearance of charts in all other sections, particularly those related to the correction of other nautical publications, is included here for reference.

| Chart No. | Pages | Chart No. | Pages | Chart No. | Pages |
|-----------|---|-----------|--------------------|-----------|-------|
| 1314 | 7 | 6241 | 35 | | |
| 3000 | 12 | 7010 | 35 | | |
| 3002 | 12 | 7011 | 35 | | |
| 3441 | 12 , 13 , 14 | | | | |
| 3442 | 14 , 15 , 16 | | | | |
| 3443 | 17 , 18 | | | | |
| 3447 | 18 | | | | |
| 3456 | 18 | | | | |
| 3458 | 19 | | | | |
| 3473 | 19 , 20 | | | | |
| 3475 | 21 | | | | |
| 3478 | 21 , 22 | | | | |
| 3479 | 22 , 23 , 24 , 25 , 26 , 27 , 28 | | | | |
| 3490 | 11 , 38 | | | | |
| 3493 | 29 | | | | |
| 3515 | 29 | | | | |
| 3546 | 29 , 30 , 31 , 38 | | | | |
| 3547 | 31 , 32 | | | | |
| 3554 | 32 | | | | |
| 3602 | 32 | | | | |
| 3603 | 32 | | | | |
| 3604 | 32 | | | | |
| 3605 | 32 , 33 | | | | |
| 3625 | 7 , 11 | | | | |
| 3670 | 33 | | | | |
| 3671 | 33 | | | | |
| 3744 | 34 | | | | |
| 3807 | 38 | | | | |
| 3890 | 34 | | | | |
| 3891 | 34 | | | | |
| 3894 | 38 | | | | |
| 3955 | 10 | | | | |
| 6022 | 34 | | | | |

Section 1: General and Safety Information

***505/23 Canadian Hydrographic Service – Magnetic Declination Calculations**

(Recurrent publication of notice *505/23, originally published in the *Notices to Mariners – Monthly Western Edition 05/2023* publication.)

Mariners are advised that CHS has adopted the harmonized World Magnetic Model (WMM), as found on the NCEI/NOAA website. Old compass rose declination information on CHS navigational products can be updated using the [Magnetic Declination Estimated Value](#) website. While the differences in the model declinations are small each year, they can become more significant over a large period of time.

***1207/23 Canadian Hydrographic Service – Inappropriate Geographical Names Review Process**

(Recurrent publication of notice *1207/23, originally published in the *Notices to Mariners – Monthly Western Edition 12/2023* publication.)

The records of the Canadian Hydrographic Service could contain geographical names that may be considered inappropriate, offensive and derogatory. Geographical naming authorities are in the process of addressing many offensive place names, the review process is underway. For more information, about inappropriate geographical names, please see the [following announcement](#).

***208/24 West Coast Haida Gwaii – Voluntary Protection Zone for Shipping**

(Recurrent publication of notice *208/24, originally published in the *Notices to Mariners – Monthly Western Edition 02/2024* publication.)

Reference: Notice *1105/21 is cancelled.

Voluntary Protection Zone for Shipping, western shore of Haida Gwaii (formerly Queen Charlotte Islands)

Haida Gwaii's remote location, rugged coastline, variable sea and weather conditions, and rich ecological and cultural heritage make it vulnerable to the potential for pollution from shipping breakdowns and accidents. Increasing the distance vessels travel offshore can increase the amount of time available to address propulsion, steering or other issues, and the likelihood of a towing vessel being able to respond to a vessel in distress or drifting. This in turn reduces the risk of grounding and oil spills.

A Voluntary Protection Zone for Shipping on the western shore of Haida Gwaii is currently in effect. In the Voluntary Protection Zone, commercial vessels of 500 gross tonnage or greater are requested to observe a minimum distance of 50 nautical miles from the western shore of Haida Gwaii with the following exemptions:

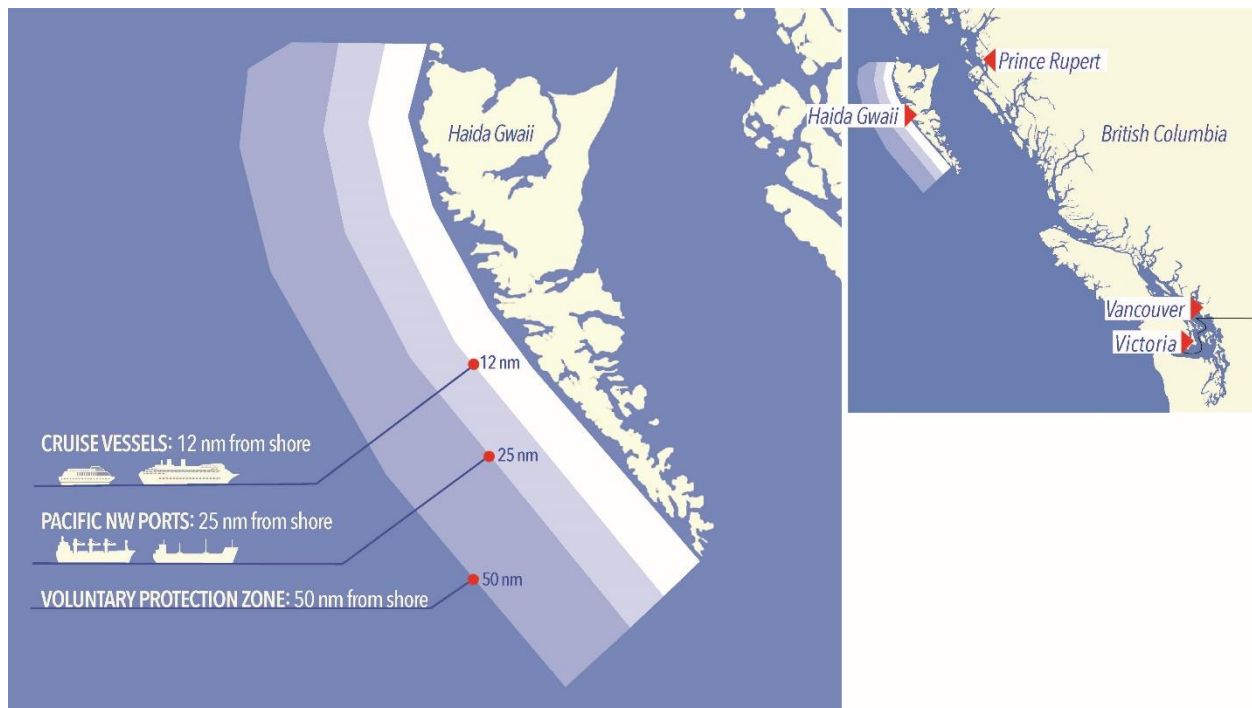
Exemptions from requested 50 nm distance:

- Cruise vessels, which are asked to observe a minimum 12 nm distance from shore;
- Vessels transiting from Alaska to British Columbia or Washington State, or vice versa, through the Voluntary Protection Zone are asked to observe a distance of at least 25 nm from shore
- No minimum distance is requested for tugs and barges (including pushing and towing alongside) or vessels engaged in commercial fishing.
- Vessels to which this bulletin applies are not required to observe requested minimum distances if doing so may compromise navigational, vessel, passenger or cargo safety.

The Voluntary Protection Zone for Shipping coordinates are:

| | |
|---------------|----------------|
| 54° 15.436' N | 133° 04.788' W |
| 54° 17.572' N | 134° 02.484' W |
| 54° 13.614' N | 134° 19.427' W |
| 54° 11.786' N | 134° 30.841' W |
| 53° 44.036' N | 134° 32.677' W |
| 53° 11.118' N | 134° 16.412' W |
| 52° 18.483' N | 133° 20.917' W |
| 51° 24.590' N | 132° 04.081' W |
| 51° 56.158' N | 131° 01.830' W |

Vessels are requested to adhere to these distances on a voluntary basis and only when it does not jeopardize the safety of navigation, the vessel, the persons onboard, and the cargo.



***1105/24 Transport Canada – British Columbia North Coast Waterway Management Guidelines**

(Recurrent publication of notice *1105/24, originally published in the *Notices to Mariners – Monthly Western Edition* 11/2024 publication.)

Reference: Notice *1004/23 is cancelled.

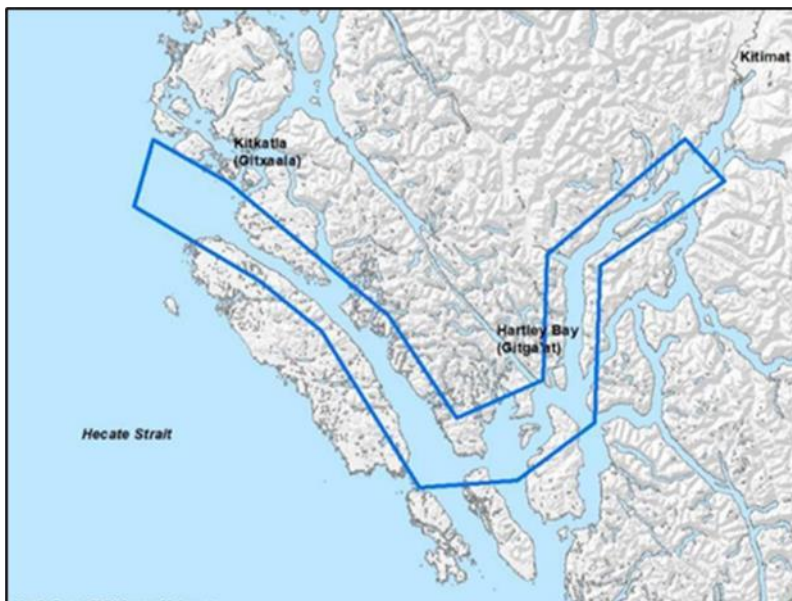
The North Coast Waterway Management Guidelines are voluntary guidelines that aim to improve safety on the water by reducing conflicts between First Nations' marine use activities, such as fishing and shoreline harvesting, and commercial vessels on the shipping route between Kitimat and Browning Entrance. The guidelines came into effect on September 1, 2022, and will be reviewed from time to time.

The guidelines apply to all vessels navigating on the route between Kitimat and Browning Entrance, on the north coast of British Columbia. This area includes:

- Douglas Channel
- Wright Sound
- Lewis Passage
- Otter Channel
- Nepean Sound, and
- Principe Channel

The complete guidelines document is available at [British Columbia North Coast Waterway Management Guidelines](#).

Nothing in these guidelines replaces or changes how we apply any Canadian or international laws or regulations, including the Collision Regulations. Furthermore, nothing in these guidelines prevents or limits the master or pilot of a ship from making any decisions to protect the vessel, the crew, or the marine environment.

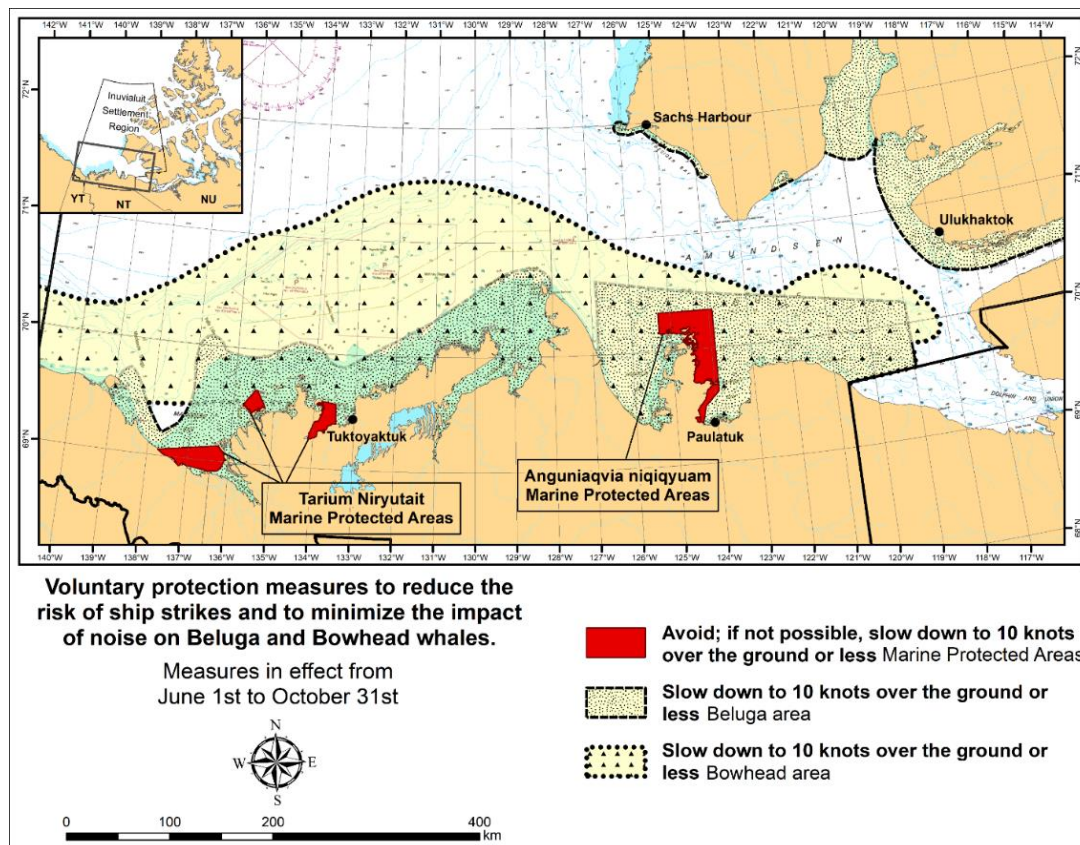


The guidelines include information for:

- all vessels that covers:
 - inshore safety zones
 - routing measures
 - speed reductions
 - guidelines for meeting and passing
 - a special operating area in Wright Sound, and
 - guidelines in case of a mechanical or electrical breakdown
- large commercial ships, including bulk carriers, general cargo vessels, liquid bulk vessels, and passenger vessels
- tugs and barges, and
- vessels operating in First Nations Areas of Concern where you must pay special attention to make sure local community users can transit and use the area safely.

***506/25 Anguniaqvia Niqquyuam Marine Protected Areas (ANMPA), Tarium Nirvutait Marine Protected Areas (TNMPA) and Beluga and Bowhead Whale Protection: Voluntary Avoidance and Slowdown Areas**

(Recurrent publication of notice *506/25, originally published in the *Notices to Mariners – Monthly Western Edition 05/2025* publication.)



The two established Marine Protected Areas (MPAs) in Canada's Western Arctic are located within the Inuvialuit Settlement Region, as such all activities must comply with the [Inuvialuit Final Agreement](#). Protection and preservation of Arctic wildlife, the environment and biological productivity is one of the principles of the Inuvialuit Final Agreement and it is this principle that led the Inuvialuit Regional Corporation and the Inuvialuit Game Council to initiate establishment of the Western Arctic MPAs. The waters in and near the MPAs, and the offshore marine habitats of the Beaufort Sea and Amundsen Gulf, are important summer foraging habitats and travel routes used seasonally (May-October) by the Eastern Beaufort Sea beluga stock, and the Bering-Chukchi-Beaufort bowhead population.

REGULATORY PROTECTION MEASURES

All whale species are protected under the Marine Mammal Regulations, pursuant to the *Fisheries Act* requiring immediate reporting of accidental contact between a vehicle or fishing gear and a marine mammal to the Minister. Within the boundaries of the MPAs, a general prohibition is set out in the Regulations, pursuant to the *Oceans Act* prohibiting activities that disturb, damage, destroy or remove any living marine organism from the areas. Any accident, including those with a marine mammal within the TNMPA must be reported within two hours after its occurrence, to the Canadian Coast Guard. For marine accidents such as collisions that occur within the ANMPA or outside the MPAs or for any situation involving a marine mammal that is dead or in trouble, report to the Fisheries and Oceans Canada, Inuvik office at (867) 777-7500.

For more information on the ANMPA and TNMPA, including local contacts and species-specific minimum distances, see Section A2 - Notices 5 and 5A.3 of the *Notices to Mariners Annual Edition*.

VOLUNTARY PROTECTION MEASURES

Voluntary measures are in effect from June 1st to October 31st. See map above.

These measures apply to merchant vessels, cruise ships, small vessels and adventure craft within the boundaries of the MPAs and the additional identified areas to prevent collisions with whales and to mitigate the underwater noise generated by the vessels. These measures should only be taken when they will not jeopardize navigational safety.

Avoid (red area): To reduce the risk of underwater noise disturbance and collisions with whales within the MPAs, vessels should avoid transiting through the MPAs if possible. If passage through this area is necessary, vessels should slow down to a speed not exceeding 10 knots over the ground and post additional lookouts such as a marine mammal observer in order to increase the chances of seeing the whales and thus taking necessary measures to avoid them. If bypassing the whales is not possible, slow down and wait for the animals to move away to a distance greater than 400 metres (0.215 nautical miles) before resuming original speed not exceeding 10 knots over the ground. It is more difficult to see the animals in rain, fog, or in rough sea states, therefore increased caution is recommended.

Slow down to 10 knots over the ground or less (yellow stippled areas): To reduce the risk of underwater noise disturbance and collisions with whales within these areas, it is recommended that vessels should slow down to a speed not exceeding 10 knots over the ground, navigate within the marked community supply channels and post additional lookouts.

These voluntary measures are secondary to rights under the [Inuvialuit Final Agreement](#).

MPA Coordinates

The Tarium Niryutait Marine Protected Areas consist of three areas of the Mackenzie Bay: Okeevik, Kittigaryuit and Niaqunnaq. The three areas are bounded by straight lines and lines following the low water line which connect the following geographical coordinates [Universal Transverse Mercator (UTM) North America Datum 1983 (NAD 83)]

| Okeevik Sub Area | | |
|------------------|------------------|------------------|
| Point | Latitude (North) | Longitude (West) |
| 1 | 69° 38' 19" | 135° 25' 09" |
| 2 | 69° 38' 03" | 135° 25' 11" |
| 3 | 69° 37' 46" | 135° 24' 52" |
| 4 | 69° 29' 49" | 135° 12' 49" |
| 5 | 69° 30' 45" | 135° 16' 56" |
| 6 | 69° 29' 26" | 135° 18' 53" |
| 7 | 69° 29' 23" | 135° 19' 06" |
| 8 | 69° 28' 07" | 135° 20' 25" |
| 9 | 69° 27' 36" | 135° 24' 25" |
| 10 | 69° 25' 51" | 135° 32' 27" |
| 11 | 69° 26' 32" | 135° 34' 54" |
| 12 | 69° 28' 21" | 135° 35' 24" |
| 13 | 69° 28' 35" | 135° 36' 40" |
| 14 | 69° 28' 39" | 135° 37' 58" |
| 15 | 69° 30' 34" | 135° 45' 54" |
| 16 | 69° 35' 18" | 135° 35' 42" |
| 17 | 69° 36' 00" | 135° 22' 10" |
| 18 | 69° 34' 40" | 135° 20' 09" |
| 19 | 69° 34' 00" | 135° 20' 09" |
| 20 | 69° 34' 00" | 135° 27' 39" |
| 21 | 69° 36' 00" | 135° 27' 39" |
| 22 | 69° 27' 00" | 135° 31' 11" |
| 23 | 69° 27' 00" | 135° 34' 45" |

| Kittigaryuit Sub Area | | |
|-----------------------|------------------|------------------|
| Point | Latitude (North) | Longitude (West) |
| 1 | 69° 35' 10" | 133° 48' 26" |
| 2 | 69° 34' 00" | 133° 28' 00" |
| 3 | 69° 23' 37" | 133° 26' 40" |
| 4 | 69° 20' 34" | 133° 40' 37" |
| 5 | 69° 19' 05" | 133° 42' 21" |
| 6 | 69° 19' 01" | 133° 42' 31" |
| 7 | 69° 20' 39" | 133° 43' 20" |
| 8 | 69° 16' 42" | 133° 54' 54" |
| 9 | 69° 15' 20" | 134° 06' 53" |
| 10 | 69° 16' 33" | 134° 05' 56" |
| 11 | 69° 20' 42" | 134° 02' 44" |
| 12 | 69° 24' 00" | 133° 59' 10" |
| 13 | 69° 24' 34" | 133° 53' 49" |
| 14 | 69° 28' 21" | 133° 48' 15" |
| 15 | 69° 28' 02" | 133° 50' 59" |
| 16 | 69° 33' 20" | 133° 47' 29" |
| 17 | 69° 34' 33" | 133° 47' 42" |
| 18 | 69° 32' 55" | 133° 51' 09" |
| 19 | 69° 32' 56" | 133° 51' 54" |
| 20 | 69° 33' 46" | 133° 55' 48" |
| 21 | 69° 33' 46" | 133° 55' 31" |

| Niaqunnaq Sub Area | | |
|--------------------|------------------|------------------|
| Point | Latitude (North) | Longitude (West) |
| 1 | 69° 08' 00" | 136° 16' 44" |
| 2 | 69° 04' 25" | 136° 07' 45" |
| 3 | 69° 03' 43" | 136° 07' 08" |
| 4 | 69° 01' 19" | 136° 04' 45" |
| 5 | 69° 01' 14" | 136° 04' 45" |
| 6 | 69° 00' 57" | 136° 05' 42" |
| 7 | 69° 00' 12" | 136° 07' 08" |
| 8 | 68° 57' 00" | 136° 10' 00" |
| 9 | 68° 55' 00" | 136° 15' 00" |
| 10 | 68° 54' 22" | 136° 31' 50" |
| 11 | 68° 55' 00" | 136° 38' 33" |
| 12 | 68° 56' 15" | 137° 00' 41" |
| 13 | 68° 56' 29" | 137° 03' 03" |
| 14 | 68° 55' 48" | 137° 11' 00" |
| 15 | 68° 57' 50" | 137° 16' 40" |
| 16 | 68° 59' 20" | 137° 21' 30" |
| 17 | 69° 03' 09" | 137° 44' 54" |

The Anguniagvia niquyuam Marine Protected Areas consist of two areas in Darnley Bay and Amundsen Gulf in the Beaufort Sea: Zone 1 and Zone 2. The areas consist of the seabed, the subsoil to a depth of five metres and the water column, including the sea ice. The two areas are bounded by straight lines and lines following the low water line which connect the following geographical coordinates [Universal Transverse Mercator (UTM) North America Datum 1983 (NAD 83)].

| Zone 1 | | |
|--------|----------------------|-----------------------|
| Point | Latitude (North) | Longitude (West) |
| A | 69° 21' 07.8" | 124° 21' 32.0" approx |
| B | 70° 12' 00.0" approx | 124° 31' 55.2" |
| C | 70° 08' 22.0" | 124° 41' 45.0" approx |
| D | 70° 09' 09.9" | 124° 57' 42.0" approx |
| E | 70° 09' 13.0" approx | 125° 05' 28.6" |
| F | 70° 09' 13.2" | 125° 17' 53.0" |
| G | 70° 20' 00.0" | 125° 17' 53.0" |
| H | 70° 20' 00.0" | 123° 54' 17.5" |
| I | 69° 37' 20.6" | 123° 54' 17.5" |
| J | 69° 30' 00.0" | 124° 15' 34.7" |

| Zone 2 | | |
|--------|------------------|-----------------------|
| Point | Latitude (North) | Longitude (West) |
| K | 70° 04' 15.8" | 124° 41' 51.0" approx |
| L | 70° 04' 48.6" | 124° 41' 54.0" approx |
| M | 70° 02' 12.9" | 124° 35' 23.0" approx |
| N | 70° 02' 12.9" | 124° 35' 29.0" approx |

*519(P)/25 Scott Islands – Paper Chart to be Discontinued

(Recurrent publication of notice *506/25, originally published in the *Notices to Mariners – Monthly Western Edition 05/2025* publication.)

Reference chart: 3625

The Canadian Hydrographic Service proposes to permanently discontinue paper chart 3625 called Scott Islands.

Mariners and other interested parties are invited to comment on this action until August 31, 2025.

Comments should be directed to the [Canadian Hydrographic Service email address](#).

Any objections raised must state the facts on which they are based and should include supporting information on safety, commerce and public benefit.

*701/25 Canadian Hydrographic Service – Nautical Charts

| Charts | Main Title | Scale | Edition Date | Published | Cat# | Price |
|---------------------|-------------------------|----------|--------------|------------|------|---------|
| New Editions | | | | | | |
| 1314 | Donnacona à/to Batiscan | 1:40 000 | 2025-06-06 | 2025-07-04 | 1 | \$20.00 |

*702/25 Canadian Hydrographic Service – Electronic Navigational Charts

| S-57 ENC Number | Chart Title | ENC Compilation Scale | Published |
|----------------------|-----------------|-----------------------|------------|
| New Charts | | | |
| CA52XJKA (Edn 1.000) | CA52XJKA | 1:2 000 | 2025-07-11 |
| CA52YJKA (Edn 1.000) | CA52YJKA | 1:2 000 | 2025-07-11 |
| CA531JJA (Edn 1.000) | CA531JJA | 1:2 000 | 2025-07-11 |
| CA531JKA (Edn 1.000) | CA531JKA | 1:2 000 | 2025-07-11 |
| CA531JLA (Edn 1.000) | CA531JLA | 1:2 000 | 2025-07-11 |
| CA531JMA (Edn 1.000) | CA531JMA | 1:2 000 | 2025-07-11 |
| CA533JSA (Edn 1.000) | CA533JSA | 1:2 000 | 2025-07-11 |
| CA537K0A (Edn 1.000) | CA537K0A | 1:2 000 | 2025-07-11 |
| CA537K4A (Edn 1.000) | CA537K4A | 1:2 000 | 2025-07-11 |
| CA538KAA (Edn 1.000) | CA538KAA | 1:2 000 | 2025-07-11 |
| CA538KBA (Edn 1.000) | CA538KBA | 1:2 000 | 2025-07-11 |
| CA538KCA (Edn 1.000) | CA538KCA | 1:2 000 | 2025-07-11 |
| CA539KCA (Edn 1.000) | CA539KCA | 1:6 000 | 2025-07-11 |
| CA53MLDA (Edn 1.000) | Port4400N07670W | 1:6 000 | 2025-07-18 |
| CA53MLEA (Edn 1.000) | Port4400N07660W | 1:6 000 | 2025-07-18 |
| CA53MLFA (Edn 1.000) | Port4400N07650W | 1:6 000 | 2025-07-18 |
| CA53NLDA (Edn 1.000) | Port4410N07670W | 1:6 000 | 2025-07-18 |
| CA53NLEA (Edn 1.000) | Port4410N07660W | 1:6 000 | 2025-07-18 |
| CA53NLFA (Edn 1.000) | Port4410N07650W | 1:6 000 | 2025-07-18 |

| S-57 ENC Number | Chart Title | ENC Compilation Scale | Published |
|----------------------|--------------------|-----------------------|------------|
| CA53PLDA (Edn 1.000) | Port4420N07670W | 1:6 000 | 2025-07-18 |
| CA53PLEA (Edn 1.000) | Port4420N07660W | 1:6 000 | 2025-07-18 |
| CA53PLFA (Edn 1.000) | Port4420N07650W | 1:6 000 | 2025-07-18 |
| CA54CQKA (Edn 1.000) | CA54CQKA | 1:6 000 | 2025-07-11 |
| CA571542 (Edn 1.000) | CA571542 | 1:11 000 | 2025-07-04 |
| CA571545 (Edn 1.000) | CA571545 | 1:11 000 | 2025-07-04 |
| CA571546 (Edn 1.000) | CA571546 | 1:11 000 | 2025-07-04 |
| CA571547 (Edn 1.000) | CA571547 | 1:11 000 | 2025-07-04 |
| CA571548 (Edn 1.000) | CA571548 | 1:11 000 | 2025-07-04 |
| CA571549 (Edn 1.000) | CA571549 | 1:11 000 | 2025-07-04 |
| CA571550 (Edn 1.000) | CA571550 | 1:11 000 | 2025-07-04 |
| CA571551 (Edn 1.000) | CA571551 | 1:11 000 | 2025-07-04 |
| CA571552 (Edn 1.000) | CA571552 | 1:11 000 | 2025-07-04 |
| CA571553 (Edn 1.000) | CA571553 | 1:11 000 | 2025-07-04 |
| CA571554 (Edn 1.000) | CA571554 | 1:11 000 | 2025-07-04 |
| CA571555 (Edn 1.000) | CA571555 | 1:11 000 | 2025-07-04 |
| CA571556 (Edn 1.000) | CA571556 | 1:11 000 | 2025-07-04 |
| CA571557 (Edn 1.000) | CA571557 | 1:11 000 | 2025-07-04 |
| CA571558 (Edn 1.000) | CA571558 | 1:11 000 | 2025-07-04 |
| CA571559 (Edn 1.000) | CA571559 | 1:11 000 | 2025-07-04 |
| CA571560 (Edn 1.000) | CA571560 | 1:11 000 | 2025-07-04 |
| CA571561 (Edn 1.000) | CA571561 | 1:11 000 | 2025-07-04 |
| CA571580 (Edn 1.000) | CA571580 | 1:11 000 | 2025-07-18 |
| CA571581 (Edn 1.000) | CA571581 | 1:11 000 | 2025-07-18 |
| CA571582 (Edn 1.000) | CA571582 | 1:11 000 | 2025-07-18 |
| CA571583 (Edn 1.000) | CA571583 | 1:11 000 | 2025-07-18 |
| CA571584 (Edn 1.000) | CA571584 | 1:11 000 | 2025-07-18 |
| New Editions | | | |
| CA43XM7A (Edn 3.000) | Transit4500N07400W | 1:11 000 | 2025-07-11 |
| CA448M7A (Edn 3.000) | Transit4600N07400W | 1:11 000 | 2025-07-25 |
| CA448MHA (Edn 4.000) | Transit4600N07300W | 1:11 000 | 2025-07-11 |
| CA448N4A (Edn 3.000) | Transit4600N07100W | 1:22 500 | 2025-07-18 |
| CA44JN4A (Edn 4.000) | Transit4700N07100W | 1:22 500 | 2025-07-18 |
| CA44JS2A (Edn 2.000) | CA44JS2A | 1:45 000 | 2025-07-04 |
| CA44JS2B (Edn 2.000) | CA44JS2B | 1:45 000 | 2025-07-04 |
| CA44JSCA (Edn 2.000) | CA44JSCA | 1:45 000 | 2025-07-04 |
| CA471219 (Edn 2.000) | CA471219 | 1:22 500 | 2025-07-18 |
| CA542M9A (Edn 3.000) | Port4540N07380W | 1:6 000 | 2025-07-25 |
| CA542MAA (Edn 2.000) | Port4540N07370W | 1:6 000 | 2025-07-11 |

| S-57 ENC Number | Chart Title | ENC Compilation Scale | Published |
|-------------------------------------|--|-----------------------|------------|
| CA542MCA (Edn 3.000) | Port4540N07350W | 1:6 000 | 2025-07-25 |
| CA543MBA (Edn 2.000) | Port4550N07360W | 1:6 000 | 2025-07-18 |
| CA543MCA (Edn 3.000) | Port4550N07350W | 1:6 000 | 2025-07-11 |
| CA544MBA (Edn 2.000) | Port4560N07360W | 1:6 000 | 2025-07-11 |
| CA544MCA (Edn 2.000) | Port4560N07350W | 1:6 000 | 2025-07-11 |
| CA545MBA (Edn 2.000) | Port4570N07360W | 1:6 000 | 2025-07-11 |
| CA545MCA (Edn 2.000) | Port4570N07350W | 1:6 000 | 2025-07-11 |
| CA545MDA (Edn 2.000) | Port4570N07340W | 1:2 000 | 2025-07-11 |
| CA546MDA (Edn 2.000) | Port4580N07340W | 1:4 000 | 2025-07-11 |
| CA546MEA (Edn 2.000) | Port4580N07330W | 1:4 000 | 2025-07-11 |
| CA547MFA (Edn 2.000) | Port4590N07320W | 1:6 000 | 2025-07-11 |
| CA548MFA (Edn 2.000) | Port4600N07320W | 1:4 000 | 2025-07-11 |
| CA548MGA (Edn 2.000) | Port4600N07310W | 1:4 000 | 2025-07-11 |
| CA54AMLA (Edn 2.000) | Port4620N07270W | 1:2 000 | 2025-07-11 |
| CA54CMPA (Edn 2.000) | Port4640N07240W | 1:6 000 | 2025-07-11 |
| CA556PHA (Edn 2.000) | Port4910N06640W | 1:2 000 | 2025-07-04 |
| CA55XSSA (Edn 4.000) | CA55XSSA | 1:11 000 | 2025-07-04 |
| Charts Permanently Withdrawn | | | |
| CA570008 | Montague Harbour | | |
| CA570088 | Tofino | | |
| CA570155 | Osborn Bay | Cancelled by CA571545 | |
| CA570186 | Bedwell Harbour to/à Georgeson Passage | Cancelled by CA571549 | |
| CA570237 | Sansum Narrows | Cancelled by CA571555 | |
| CA570238 | Fulford Harbour | Cancelled by CA571554 | |
| CA573105 | Port Burwell | Cancelled by CA537K4A | |
| CA573118 | Kingston Harbour and Approaches/et les approches | | |
| CA573303 | Port Dover | | |
| CA573306 | Nanticoke Harbour | | |
| CA573312 | Wheatley Harbour | Cancelled by CA531JMA | |
| CA573314 | Kingsville Harbour | Cancelled by CA531JJA | |
| CA573315 | Leamington Harbour | | |
| CA573316 | Port Stanley | Cancelled by CA537K0A | |
| CA573327 | Erieau - Entrance to Rondeau Bay | Cancelled by CA533JSA | |
| CA670734 | Crofton | Cancelled by CA571545 | |
| CA673443 | Scudder | Cancelled by CA52YJKA | |
| CA673444 | Westdock | Cancelled by CA52XJKA | |

***703/25 Transport Canada - Ship Safety Bulletins #10, #11, #12 and #13/2025**

New **Ship Safety Bulletins** have recently been posted on the [Transport Canada website](#).

To view or download these bulletins, please click on the links below:

[SSB#10/2025](#) – Now in force: Discharge requirements for cruise ships
RDIMS# 21020637

[SSB#11/2025](#) – 2025 Passenger vessel concentrated inspection campaign
RDIMS# 20970648

[SSB#12/2025](#) – Difficulties and best practices for detecting radar search and rescue transponders (SARTs)

[SSB#13/2025](#) – Implementation of the International Maritime Organization's (IMO) Prohibition on the use and carriage for use as fuel of heavy fuel oil (HFO) by ships in Canadian Arctic waters

Sign up for [e-Bulletin](#) to receive an e-mail notice each time a new Ship Safety Bulletin is published on our website.

Contact us at marinesafety-securitemaritime@tc.gc.ca or 1-855-859-3123 (Toll Free).

***706/25 Plans - Prince Rupert Harbour – Unlit Buoy Repositioned**

Reference chart: 3955

The following unlit buoy has been repositioned to the following coordinates:

| Aid Name | LL # | Position |
|---------------------------|------|--------------------------------|
| Porpoise Harbour buoy D33 | 6031 | 54° 13' 22.0"N 130° 17' 55.0"W |

(P2025-027)

Section 1A: Temporary and Preliminary Notices

Reminder – Comment Period for Active Preliminary Notices

This is a reminder that the comment period is still open for the following active Preliminary notices:

| Notice # | Reference Chart # | Aids Affected (LL #) | Intent of Notice |
|----------------------------------|-------------------|----------------------|--------------------------------------|
| Pacific Coast | | | |
| 518(P)/25 | 3490 | 366.1 | Aid to Navigation to be Discontinued |
| Other Preliminary Notices | | | |
| 519(P)/25 | 3625 | N/A | Paper Chart to be Discontinued |

Please refer to the [Notices to Mariners - Monthly Summary of Temporary and Preliminary Notices](#) publication for details.

Inland Waters

Temporary Notices

No notices applicable for this edition.

Preliminary Notices

No notices applicable for this edition.

Pacific Coast

Temporary Notices

No notices applicable for this edition.

Preliminary Notices

No notices applicable for this edition.

Section 2: Chart Corrections

3000 - Juan de Fuca Strait to/à Dixon Entrance - New Edition - 20-JAN-1989 - NAD 1927

25-JUL-2025

LNMD. 14-MAR-2025

Amend note Chart/ Carte 3001 to read Chart/Carte 3011
(See Chart 1, A18) 49°39'23.0"N 127°47'08.5"W

DFO(6205254-01)

3002 - Queen Charlotte Sound to/à Dixon Entrance - New Edition - 16-DEC-1994 - NAD 1927

25-JUL-2025

LNMD. 28-FEB-2025

Amend note Adjoining Chart/Carte adjacente 3001 to read Adjoining Chart/Carte outside south border at 129°25'00"W
adjacente 3011
(See Chart 1, A20)

DFO(6205254-08)

Amend note Adjoining Chart/Carte adjacente 3001 to read Adjoining Chart/Carte outside east border at 50°53'00"N
adjacente 3011
(See Chart 1, A20)

DFO(6205254-09)

3441 - Haro Strait, Boundary Pass and/et Satellite Channel - New Edition - 01-JUL-2005 - NAD 1983

04-JUL-2025

LNMD. 06-JUN-2025

Delete depth of 1.6 metres
(See Chart 1, I10) 48°41'41.4"N 123°20'05.4"W

DFO(6205227-04)

Add depth of 1.2 metres
(See Chart 1, I10) 48°41'41.2"N 123°20'04.7"W

DFO(6205227-05)

Add depth of 0.8 metres
(See Chart 1, I10) 48°40'08.1"N 123°22'18.3"W

DFO(6205227-09)

Add rock which covers and uncovers with drying height of 0.3 metres
(See Chart 1, K11) 48°40'42.9"N 123°20'25.3"W

DFO(6205227-31)

Delete depth of 5.8 metres
(See Chart 1, I10) 48°39'55.9"N 123°18'02.8"W

DFO(6205228-02)

Add depth of 1.3 metres
(See Chart 1, I10) 48°39'55.0"N 123°18'00.9"W

DFO(6205228-03)

Add depth of 1 metre
(See Chart 1, I10) 48°39'50.1"N 123°16'55.7"W

DFO(6205228-07)

| | | |
|-------------|---|--|
| Add | submarine cable (See Chart 1, L30.1) | joining 48°46'49.4"N 123°18'43.8"W 48°46'55.6"N 123°18'52.8"W 48°46'56.7"N 123°19'13.2"W 48°46'50.0"N 123°19'30.6"W 48°45'32.2"N 123°21'15.0"W 48°45'29.3"N 123°21'54.7"W 48°45'36.5"N 123°22'14.1"W 48°45'36.8"N 123°22'35.0"W 48°45'29.0"N 123°22'51.9"W and 48°45'28.3"N 123°23'03.9"W <i>DFO(6205230-01)</i> |
| 11-JUL-2025 | | LNM/D. 04-JUL-2025 |
| Add | submarine cable (See Chart 1, L30.1) | joining 48°48'17.3"N 123°13'48.3"W 48°48'15.1"N 123°13'43.8"W 48°48'00.3"N 123°12'40.3"W 48°47'49.7"N 123°12'10.2"W 48°47'44.1"N 123°12'04.7"W 48°47'39.1"N 123°12'03.3"W 48°47'38.3"N 123°12'00.8"W and 48°47'39.5"N 123°11'57.5"W <i>DFO(6205237-09)</i> |
| Add | submarine cable (See Chart 1, L30.1) | joining 48°48'17.3"N 123°20'04.1"W 48°48'13.4"N 123°20'01.8"W 48°48'05.6"N 123°19'51.7"W 48°47'42.6"N 123°19'11.1"W 48°47'30.8"N 123°19'09.9"W and 48°47'21.9"N 123°18'59.7"W <i>DFO(6205237-10)</i> |
| Add | submarine cable (See Chart 1, L30.1) | joining 48°47'21.9"N 123°18'58.0"W 48°47'22.0"N 123°19'08.6"W 48°47'19.5"N 123°19'18.2"W 48°47'10.2"N 123°19'30.9"W 48°46'52.3"N 123°19'43.1"W 48°46'22.4"N 123°20'18.0"W 48°46'15.8"N 123°20'21.9"W 48°46'05.2"N 123°20'21.2"W 48°45'26.4"N 123°21'13.1"W 48°45'19.5"N 123°21'43.5"W 48°45'12.2"N 123°22'19.6"W 48°45'06.8"N 123°22'27.0"W 48°44'51.1"N 123°22'28.5"W 48°44'39.0"N 123°22'35.7"W 48°43'54.5"N 123°23'54.9"W 48°43'49.5"N 123°24'11.5"W 48°43'48.2"N 123°24'28.0"W 48°44'10.7"N 123°25'06.1"W 48°44'28.0"N 123°25'31.7"W 48°44'29.8"N 123°25'37.1"W and 48°44'28.7"N 123°25'52.6"W <i>DFO(6205237-11)</i> |

| | | |
|-----|---|---|
| Add | submarine cable (See Chart 1, L30.1) | joining 48°44'10.5"N 123°25'05.8"W 48°43'52.8"N 123°25'13.3"W 48°43'47.0"N 123°25'20.1"W 48°43'40.7"N 123°25'22.9"W 48°43'11.8"N 123°26'15.8"W 48°43'07.7"N 123°26'51.0"W 48°42'52.9"N 123°27'52.7"W 48°42'49.7"N 123°28'45.1"W 48°42'39.0"N 123°29'40.8"W 48°42'49.7"N 123°30'19.4"W 48°43'09.4"N 123°30'53.3"W 48°44'02.3"N 123°32'19.4"W 48°44'13.8"N 123°32'34.0"W 48°44'31.0"N 123°32'46.9"W 48°44'39.8"N 123°33'01.6"W 48°44'51.2"N 123°33'12.2"W 48°44'55.5"N 123°33'09.3"W 48°44'57.4"N 123°33'03.1"W and 48°44'54.1"N 123°32'58.0"W DFO(6205237-12) |
|-----|---|---|

| | | |
|-----|---|---|
| Add | submarine cable (See Chart 1, L30.1) | joining 48°44'10.7"N 123°25'06.1"W 48°44'01.0"N 123°25'00.4"W 48°42'55.1"N 123°23'59.4"W 48°42'08.2"N 123°22'17.2"W 48°41'07.6"N 123°21'32.5"W 48°40'49.5"N 123°21'33.6"W 48°40'33.5"N 123°22'13.1"W 48°40'34.0"N 123°22'26.0"W 48°40'29.1"N 123°22'59.2"W and 48°40'33.9"N 123°23'47.7"W DFO(6205237-13) |
|-----|---|---|

3442 - North Pender Island to Thetis Island - New Edition - 01-JUL-2005 - NAD 1983
04-JUL-2025

LNM/D. 16-MAY-2025

| | | |
|-----|---|---|
| Add | submarine cable (See Chart 1, L30.1) | joining 48°46'49.4"N 123°18'43.8"W 48°46'55.6"N 123°18'52.8"W 48°46'56.7"N 123°19'13.2"W 48°46'50.0"N 123°19'30.6"W 48°45'32.2"N 123°21'15.0"W 48°45'29.3"N 123°21'54.7"W 48°45'36.5"N 123°22'14.1"W 48°45'36.8"N 123°22'35.0"W 48°45'29.0"N 123°22'51.9"W and 48°45'28.3"N 123°23'03.9"W DFO(6205230-01) |
|-----|---|---|

11-JUL-2025

LNM/D. 04-JUL-2025

| | | |
|-----|---|---|
| Add | submarine cable (See Chart 1, L30.1) | joining 49°01'40.4"N 123°37'49.9"W 49°01'08.9"N 123°37'12.3"W 49°00'39.3"N 123°36'50.7"W 49°00'17.2"N 123°36'26.6"W 48°59'37.0"N 123°35'46.9"W 48°58'18.4"N 123°34'11.0"W 48°57'57.2"N 123°33'43.7"W 48°56'45.1"N 123°32'07.7"W 48°56'22.1"N 123°31'38.4"W 48°56'13.9"N 123°31'28.5"W 48°56'07.4"N 123°31'07.3"W 48°56'01.8"N 123°30'29.9"W and 48°56'03.8"N 123°30'17.2"W DFO(6205210-07) |
|-----|---|---|

| | | |
|-----|---|---|
| Add | submarine cable (See Chart 1, L30.1) | joining 48°56'30.1"N 123°30'05.5"W 48°56'24.7"N 123°30'05.6"W 48°56'22.2"N 123°30'07.4"W 48°56'19.3"N 123°30'06.8"W 48°55'48.2"N 123°29'32.6"W 48°55'25.5"N 123°28'48.6"W 48°54'09.5"N 123°25'33.7"W 48°53'53.7"N 123°25'03.0"W 48°53'33.3"N 123°24'33.1"W 48°53'28.0"N 123°24'27.3"W 48°53'22.5"N 123°24'24.8"W 48°53'14.7"N 123°24'17.8"W 48°53'11.6"N 123°24'17.3"W and 48°53'07.2"N 123°24'20.4"W DFO(6205237-01) |
| Add | submarine cable (See Chart 1, L30.1) | joining 48°53'09.3"N 123°24'18.7"W 48°53'08.0"N 123°24'08.8"W 48°53'05.7"N 123°24'04.3"W 48°52'58.3"N 123°23'58.4"W and 48°52'54.5"N 123°23'59.6"W DFO(6205237-02) |
| Add | submarine cable (See Chart 1, L30.1) | joining 48°52'54.5"N 123°23'59.6"W 48°52'54.1"N 123°23'53.1"W 48°52'40.3"N 123°23'41.2"W 48°52'35.1"N 123°23'39.2"W 48°52'30.2"N 123°23'31.5"W 48°52'28.4"N 123°23'30.3"W 48°52'26.0"N 123°23'25.6"W 48°52'21.0"N 123°23'25.3"W and 48°52'20.0"N 123°23'24.6"W DFO(6205237-03) |
| Add | submarine cable (See Chart 1, L30.1) | joining 48°52'21.3"N 123°23'25.5"W 48°52'21.9"N 123°23'28.8"W 48°52'22.1"N 123°23'35.4"W 48°52'21.2"N 123°23'36.7"W 48°52'16.6"N 123°23'36.7"W 48°52'03.8"N 123°23'30.9"W 48°51'48.6"N 123°23'05.8"W 48°51'26.1"N 123°22'23.1"W 48°51'19.1"N 123°22'14.3"W 48°49'40.5"N 123°20'36.2"W 48°49'16.5"N 123°20'14.3"W and 48°49'10.3"N 123°20'08.1"W DFO(6205237-04) |
| Add | submarine cable (See Chart 1, L30.1) | joining 48°48'47.1"N 123°19'14.0"W 48°48'55.6"N 123°19'45.4"W 48°49'06.3"N 123°20'04.7"W 48°49'15.4"N 123°20'10.5"W 48°49'22.5"N 123°20'06.0"W 48°49'31.6"N 123°19'46.6"W 48°49'34.3"N 123°19'25.0"W 48°49'29.8"N 123°18'27.7"W 48°49'23.4"N 123°18'00.4"W 48°49'15.0"N 123°17'52.5"W 48°49'08.3"N 123°17'16.0"W and 48°49'01.6"N 123°17'09.6"W DFO(6205237-05) |

| | | |
|-----|---|--|
| Add | submarine cable (See Chart 1, L30.1) | joining 48°48'56.9"N 123°17'09.5"W 48°49'01.5"N 123°16'45.8"W 48°48'58.2"N 123°16'25.4"W 48°48'52.4"N 123°15'15.8"W 48°48'45.2"N 123°14'47.2"W 48°48'15.1"N 123°13'43.8"W 48°48'00.3"N 123°12'40.3"W 48°47'49.7"N 123°12'10.2"W 48°47'44.1"N 123°12'04.7"W 48°47'39.1"N 123°12'03.3"W 48°47'38.3"N 123°12'00.8"W and 48°47'39.5"N 123°11'57.5"W <i>DFO(6205237-06)</i> |
| Add | submarine cable (See Chart 1, L30.1) | joining 48°48'47.1"N 123°19'14.0"W 48°48'42.5"N 123°19'34.5"W 48°48'35.4"N 123°19'48.9"W 48°48'25.6"N 123°20'04.2"W 48°48'19.7"N 123°20'05.5"W 48°48'13.4"N 123°20'01.8"W 48°48'05.6"N 123°19'51.7"W 48°47'42.6"N 123°19'11.1"W 48°47'30.8"N 123°19'09.9"W and 48°47'21.9"N 123°18'59.7"W <i>DFO(6205237-07)</i> |
| Add | submarine cable (See Chart 1, L30.1) | joining 48°47'21.9"N 123°18'59.7"W 48°47'22.0"N 123°19'08.6"W 48°47'19.5"N 123°19'18.2"W 48°47'10.2"N 123°19'30.9"W 48°46'52.3"N 123°19'43.1"W 48°46'22.4"N 123°20'18.0"W 48°46'15.8"N 123°20'21.9"W 48°46'05.2"N 123°20'21.2"W and 48°45'26.4"N 123°21'13.1"W <i>DFO(6205237-08)</i> |

3443 - Thetis Island to/à Nanaimo - New Edition - 20-DEC-2002 - NAD 1983
11-JUL-2025

LNMD. 11-APR-2025

Add submarine cable
(See Chart 1, L30.1)

joining 49°10'30.8"N 123°51'53.4"W
49°10'35.3"N 123°52'01.7"W
49°10'38.7"N 123°52'13.0"W
49°10'39.6"N 123°52'18.6"W
49°10'39.3"N 123°52'30.8"W
49°10'38.5"N 123°52'34.0"W
49°10'37.6"N 123°52'35.6"W
49°10'35.3"N 123°52'37.6"W
49°10'13.8"N 123°52'36.0"W
49°09'50.5"N 123°52'27.0"W
49°09'30.2"N 123°52'05.3"W
49°09'19.6"N 123°51'41.5"W
49°09'10.5"N 123°51'17.9"W
49°08'42.1"N 123°49'46.2"W
49°08'31.5"N 123°49'18.1"W
49°08'25.7"N 123°49'05.0"W
49°08'20.3"N 123°48'45.5"W
49°08'19.7"N 123°48'32.5"W
49°08'16.0"N 123°47'54.7"W
49°08'11.1"N 123°47'25.3"W
49°08'05.7"N 123°47'06.9"W
49°08'02.4"N 123°46'53.7"W
49°07'58.9"N 123°46'43.5"W
49°07'49.5"N 123°46'27.4"W
49°07'35.2"N 123°45'58.1"W
49°07'23.6"N 123°45'28.5"W
49°06'51.9"N 123°44'33.6"W
49°06'22.1"N 123°43'49.3"W
49°05'40.5"N 123°42'51.5"W
49°05'19.0"N 123°42'22.0"W
49°05'03.6"N 123°42'06.0"W
49°04'45.3"N 123°41'20.9"W
49°04'37.0"N 123°41'02.7"W
49°04'12.7"N 123°40'22.5"W
49°04'01.5"N 123°40'06.3"W
49°03'02.6"N 123°39'31.1"W
49°02'40.4"N 123°39'10.1"W
49°02'37.8"N 123°39'01.0"W
and 49°02'33.4"N 123°38'36.0"W
DFO(6205210-05)

Add submarine cable
(See Chart 1, L30.1)

joining 49°02'34.3"N 123°38'41.4"W
49°02'33.8"N 123°38'54.3"W
49°02'29.9"N 123°38'59.8"W
49°02'27.2"N 123°38'59.8"W
49°02'24.2"N 123°38'58.4"W
49°02'21.5"N 123°38'54.9"W
49°02'05.1"N 123°38'19.2"W
49°01'46.2"N 123°37'55.1"W
49°01'08.9"N 123°37'12.3"W
49°00'38.0"N 123°36'49.2"W
48°59'45.9"N 123°35'56.5"W
48°59'28.2"N 123°35'34.8"W
48°58'08.7"N 123°33'59.4"W
and 48°57'12.3"N 123°32'43.4"W
DFO(6205210-06)

Affix patch 49°05'00.0"N 123°48'00.0"W
Download Patch - https://www.notmar.gc.ca/chsftp/patches/3443_6205236_1_202506181254.pdf
DFO(6205236-01)

3447 - Nanaimo Harbour and/et Departure Bay - New Edition - 15-APR-2022 - World Geodetic System 1984

11-JUL-2025

LNMD. 11-APR-2025

Add submarine cable joining 49°10'35.9"N 123°52'04.0"W
(See Chart 1, L30.1) 49°10'38.1"N 123°52'10.9"W
49°10'39.6"N 123°52'18.5"W
49°10'39.2"N 123°52'30.7"W
49°10'38.6"N 123°52'33.8"W
49°10'36.5"N 123°52'36.9"W
49°10'35.3"N 123°52'37.7"W
49°10'24.6"N 123°52'37.6"W
49°10'16.1"N 123°52'35.9"W
49°10'07.4"N 123°52'33.7"W
49°09'51.0"N 123°52'27.6"W
and 49°09'30.4"N 123°52'04.0"W
DFO(6205210-02)

3456 - Halibut Bank to/à Ballenas Channel - New Chart - 01-JUL-2011 - NAD 1983

11-JUL-2025

LNMD. 11-APR-2025

Add submarine cable joining 49°10'30.9"N 123°51'53.5"W
(See Chart 1, L30.1) 49°10'36.0"N 123°52'04.3"W
49°10'39.0"N 123°52'14.7"W
49°10'39.6"N 123°52'22.5"W
49°10'39.0"N 123°52'31.9"W
49°10'37.2"N 123°52'36.2"W
49°10'34.9"N 123°52'37.5"W
49°10'20.3"N 123°52'36.7"W
and 49°10'12.0"N 123°52'35.3"W
DFO(6205210-01)

3458 - Approaches to/Approches à Nanaimo Harbour - New Edition - 10-MAR-1995 - NAD 1983

11-JUL-2025

LNMD. 11-APR-2025

Add submarine cable
(See Chart 1, L30.1)

joining 49°10'30.8"N 123°51'53.6"W
49°10'31.9"N 123°51'55.0"W
49°10'35.2"N 123°52'01.9"W
49°10'38.7"N 123°52'13.5"W
49°10'39.6"N 123°52'18.7"W
49°10'39.3"N 123°52'30.7"W
49°10'38.5"N 123°52'34.0"W
49°10'36.2"N 123°52'37.2"W
49°10'35.0"N 123°52'37.6"W
49°10'13.3"N 123°52'35.7"W
49°09'55.2"N 123°52'28.8"W
49°09'50.9"N 123°52'27.6"W
49°09'40.3"N 123°52'15.6"W
49°09'30.5"N 123°52'05.6"W
49°09'14.1"N 123°51'29.1"W
49°09'07.3"N 123°51'07.3"W
49°08'40.1"N 123°49'39.7"W
49°08'32.3"N 123°49'20.5"W
49°08'25.3"N 123°49'05.4"W
49°08'20.5"N 123°48'46.1"W
49°08'18.5"N 123°48'22.0"W
49°08'15.9"N 123°47'55.3"W
49°08'14.2"N 123°47'43.5"W
49°08'10.9"N 123°47'24.6"W
49°08'02.9"N 123°46'55.2"W
and 49°08'00.0"N 123°46'46.7"W
DFO(6205210-03)

3473 - Active Pass - New Edition - 10-JAN-2020 - World Geodetic System 1984

11-JUL-2025

LNMD. 28-MAR-2025

Add submarine cable
(See Chart 1, L30.1)

joining 48°51'37.6"N 123°22'45.0"W
48°51'26.1"N 123°22'23.1"W
48°51'09.7"N 123°22'03.8"W
48°50'48.1"N 123°21'42.4"W
and 48°50'22.0"N 123°21'19.0"W
DFO(6205237-18)

3473 - Montague Harbour - New Edition - 10-JAN-2020 - World Geodetic System 1984

11-JUL-2025

LNMD. 28-MAR-2025

Add submarine cable
(See Chart 1, L30.1)

joining 48°54'19.4"N 123°25'59.0"W
48°54'09.5"N 123°25'33.7"W
48°53'53.7"N 123°25'03.0"W
48°53'33.3"N 123°24'33.1"W
48°53'28.0"N 123°24'27.3"W
48°53'22.5"N 123°24'24.8"W
48°53'14.7"N 123°24'17.8"W
48°53'11.6"N 123°24'17.3"W
and 48°53'07.1"N 123°24'20.2"W
DFO(6205237-14)

Add submarine cable
(See Chart 1, L30.1)

joining 48°53'09.3"N 123°24'18.7"W
48°53'08.0"N 123°24'08.8"W
48°53'05.7"N 123°24'04.3"W
48°52'58.3"N 123°23'58.4"W
and 48°52'54.3"N 123°24'00.0"W
DFO(6205237-15)

| | | |
|-----|---|--|
| Add | submarine cable (See Chart 1, L30.1) | joining 48°52'54.5"N 123°24'00.2"W 48°52'54.1"N 123°23'53.1"W 48°52'40.3"N 123°23'41.2"W 48°52'35.1"N 123°23'39.2"W 48°52'30.2"N 123°23'31.5"W 48°52'28.4"N 123°23'30.3"W 48°52'26.0"N 123°23'25.6"W 48°52'21.3"N 123°23'25.5"W and 48°52'19.0"N 123°23'24.1"W <i>DFO(6205237-16)</i> |
|-----|---|--|

| | | |
|-----|---|--|
| Add | submarine power cable (See Chart 1, L31.1) | joining 48°52'21.3"N 123°23'25.5"W 48°52'21.9"N 123°23'28.8"W 48°52'22.1"N 123°23'35.4"W 48°52'21.2"N 123°23'36.7"W and 48°52'16.0"N 123°23'36.5"W <i>DFO(6205237-17)</i> |
|-----|---|--|

3473 - Porlier Pass - New Edition - 10-JAN-2020 - World Geodetic System 1984
11-JUL-2025

LNM/D. 28-MAR-2025

| | | |
|-----|---|--|
| Add | submarine cable (See Chart 1, L30.1) | joining 48°59'49.0"N 123°35'59.6"W 49°00'20.1"N 123°36'29.5"W 49°00'43.0"N 123°36'53.8"W 49°01'09.0"N 123°37'12.5"W 49°01'29.0"N 123°37'36.7"W 49°01'36.4"N 123°37'45.4"W and 49°01'43.0"N 123°37'52.0"W <i>DFO(6205210-08)</i> |
|-----|---|--|

3475 - Dodd Narrows - New Edition - 30-APR-2021 - World Geodetic System 1984
11-JUL-2025

LNM/D. 03-JAN-2025

Add submarine cable
(See Chart 1, L30.1)

joining 49°04'57.4"N 123°41'51.3"W
49°05'01.6"N 123°42'01.1"W
49°05'03.5"N 123°42'05.8"W
49°05'19.2"N 123°42'22.1"W
49°05'28.7"N 123°42'35.0"W
49°05'56.8"N 123°43'15.9"W
49°06'04.1"N 123°43'25.6"W
49°06'11.7"N 123°43'34.8"W
49°06'33.1"N 123°44'03.6"W
49°07'05.5"N 123°44'55.2"W
49°07'23.5"N 123°45'28.7"W
49°07'34.9"N 123°45'57.3"W
49°07'49.3"N 123°46'26.9"W
49°07'54.3"N 123°46'35.6"W
49°07'59.1"N 123°46'43.7"W
49°08'02.0"N 123°46'52.4"W
49°08'05.7"N 123°47'06.5"W
49°08'09.7"N 123°47'19.9"W
49°08'11.7"N 123°47'28.4"W
49°08'14.9"N 123°47'47.5"W
49°08'17.2"N 123°48'06.8"W
49°08'19.9"N 123°48'32.3"W
49°08'20.3"N 123°48'44.1"W
49°08'21.1"N 123°48'48.7"W
49°08'24.0"N 123°48'58.5"W
49°08'34.0"N 123°49'24.4"W
49°08'39.9"N 123°49'38.9"W
49°09'11.2"N 123°51'18.9"W
49°09'30.5"N 123°52'05.9"W
and 49°09'44.3"N 123°52'19.5"W
DFO(6205210-04)

3478 - Fulford Harbour - New Edition - 12-JUL-2013 - NAD 1983
11-JUL-2025

LNM/D. 09-MAY-2025

Add submarine cable
(See Chart 1, L30.1)

joining 48°43'49.9"N 123°24'10.7"W
48°43'48.2"N 123°24'28.0"W
48°44'10.7"N 123°25'06.1"W
48°44'28.0"N 123°25'31.7"W
48°44'29.8"N 123°25'37.1"W
and 48°44'28.7"N 123°25'52.6"W
DFO(6205237-20)

Add submarine cable
(See Chart 1, L30.1)

joining 48°44'10.5"N 123°25'06.0"W
48°44'01.0"N 123°25'00.4"W
and 48°43'35.3"N 123°24'37.0"W
DFO(6205237-21)

Add submarine cable
(See Chart 1, L30.1)

joining 48°44'10.5"N 123°25'05.8"W
48°43'52.8"N 123°25'13.3"W
48°43'47.0"N 123°25'20.1"W
48°43'40.7"N 123°25'22.9"W
and 48°43'35.3"N 123°25'32.8"W
DFO(6205237-22)

3478 - Ganges Harbour and/et Long Harbour - New Edition - 12-JUL-2013 - NAD 1983

11-JUL-2025

LNMD. 09-MAY-2025

| | | |
|-----|---|--|
| Add | submarine cable (See Chart 1, L30.1) | joining 48°52'05.3"N 123°23'31.6"W 48°51'53.1"N 123°23'14.5"W 48°51'26.6"N 123°22'24.0"W 48°51'07.7"N 123°22'01.9"W and 48°50'52.2"N 123°21'46.8"W <i>DFO(6205237-19)</i> |
|-----|---|--|

3478 - Sansum Narrows - New Edition - 12-JUL-2013 - NAD 1983

11-JUL-2025

LNMD. 09-MAY-2025

| | | |
|-----|---|--|
| Add | submarine cable (See Chart 1, L30.1) | joining 48°44'54.6"N 123°32'58.4"W 48°44'57.4"N 123°33'03.1"W 48°44'55.5"N 123°33'09.3"W 48°44'51.2"N 123°33'12.2"W 48°44'39.8"N 123°33'01.6"W 48°44'31.0"N 123°32'46.9"W 48°44'13.8"N 123°32'34.0"W 48°44'02.3"N 123°32'19.4"W and 48°43'11.3"N 123°30'55.0"W <i>DFO(6205237-23)</i> |
|-----|---|--|

3479 - Approaches to/Approches à Sidney - New Chart - 18-MAY-2007 - NAD 1983

04-JUL-2025

LNMD. 14-FEB-2025

| | | |
|--------|---|--|
| Add | depth of 1.4 metres (See Chart 1, I10) | 48°40'05.4"N 123°22'08.5"W <i>DFO(6205227-01)</i> |
| Add | depth of 0.6 metres (See Chart 1, I10) | 48°40'06.7"N 123°22'11.4"W <i>DFO(6205227-02)</i> |
| Delete | depth of 2.8 metres (See Chart 1, I10) | 48°41'41.0"N 123°20'05.6"W <i>DFO(6205227-03)</i> |
| Add | depth of 1.2 metres (See Chart 1, I10) | 48°41'41.2"N 123°20'04.7"W <i>DFO(6205227-05)</i> |
| Delete | depth of 1.4 metres (See Chart 1, I10) | 48°40'32.4"N 123°22'04.0"W <i>DFO(6205227-06)</i> |
| Add | depth of 1 metre (See Chart 1, I10) | 48°40'33.2"N 123°22'03.1"W <i>DFO(6205227-07)</i> |
| Delete | depth of 2.4 metres (See Chart 1, I10) | 48°40'07.8"N 123°22'18.0"W <i>DFO(6205227-08)</i> |
| Add | depth of 0.8 metres (See Chart 1, I10) | 48°40'08.1"N 123°22'18.3"W <i>DFO(6205227-09)</i> |
| Delete | depth of 0.7 metres (See Chart 1, I10) | 48°40'45.6"N 123°22'43.3"W <i>DFO(6205227-10)</i> |

| | | |
|--------|---|--|
| Add | depth of 0.6 metres (See Chart 1, I10) | 48°40'45.6"N 123°22'44.3"W <i>DFO(6205227-11)</i> |
| Add | depth of 1.1 metres (See Chart 1, I10) | 48°41'01.3"N 123°21'57.5"W <i>DFO(6205227-12)</i> |
| Add | depth of 0.8 metres (See Chart 1, I10) | 48°40'40.1"N 123°20'22.2"W <i>DFO(6205227-13)</i> |
| Add | depth of 1.6 metres (See Chart 1, I10) | 48°40'31.8"N 123°21'51.7"W <i>DFO(6205227-14)</i> |
| Add | depth of 2.5 metres (See Chart 1, I10) | 48°40'50.4"N 123°20'27.2"W <i>DFO(6205227-15)</i> |
| Delete | depth of 3.8 metres (See Chart 1, I10) | 48°40'35.8"N 123°22'56.0"W <i>DFO(6205227-16)</i> |
| Add | depth of 2.2 metres (See Chart 1, I10) | 48°40'35.9"N 123°22'56.8"W <i>DFO(6205227-17)</i> |
| Delete | depth of 3 metres (See Chart 1, I10) | 48°40'45.3"N 123°20'22.5"W <i>DFO(6205227-18)</i> |
| Add | depth of 1.1 metres (See Chart 1, I10) | 48°40'45.2"N 123°20'22.7"W <i>DFO(6205227-19)</i> |
| Delete | depth of 6.1 metres (See Chart 1, I10) | 48°40'50.8"N 123°20'20.4"W <i>DFO(6205227-20)</i> |
| Add | depth of 0.7 metres (See Chart 1, I10) | 48°40'50.3"N 123°20'21.5"W <i>DFO(6205227-21)</i> |
| Delete | depth of 1.2 metres (See Chart 1, I10) | 48°40'41.0"N 123°22'31.1"W <i>DFO(6205227-22)</i> |
| Add | depth of 0.9 metres (See Chart 1, I10) | 48°40'41.0"N 123°22'31.1"W <i>DFO(6205227-23)</i> |
| Delete | depth of 0.9 metres (See Chart 1, I10) | 48°40'47.8"N 123°22'18.1"W <i>DFO(6205227-24)</i> |
| Add | rock which covers and uncovers with drying height of 0.1 metres (See Chart 1, K11) | 48°40'48.4"N 123°22'18.4"W <i>DFO(6205227-25)</i> |

| | | |
|------------|---|--|
| Delete | depth of 0.2 metres (See Chart 1, I10) | 48°40'48.4"N 123°20'21.4"W <i>DFO(6205227-26)</i> |
| Add | rock which covers and uncovers with drying height of 0.5 metres (See Chart 1, K11) | 48°40'48.0"N 123°20'21.3"W <i>DFO(6205227-27)</i> |
| Delete | depth of 0.4 metres (See Chart 1, I10) | 48°40'44.3"N 123°20'18.9"W <i>DFO(6205227-28)</i> |
| Add | rock awash at chart datum (See Chart 1, K12) | 48°40'44.5"N 123°20'19.4"W <i>DFO(6205227-29)</i> |
| Delete | depth of 1.2 metres (See Chart 1, I10) | 48°40'42.9"N 123°20'25.6"W <i>DFO(6205227-30)</i> |
| Add | rock which covers and uncovers with drying height of 0.3 metres (See Chart 1, K11) | 48°40'42.9"N 123°20'25.3"W <i>DFO(6205227-31)</i> |
| Reposition | port hand daybeacon (See Chart 1, Qp) | from 48°40'58.0"N 123°23'19.2"W to 48°40'58.2"N 123°23'20.1"W <i>DFO(6205227-32)</i> |
| Delete | depth of 2.8 metres (See Chart 1, I10) | 48°39'55.3"N 123°18'02.0"W <i>DFO(6205228-01)</i> |
| Add | depth of 1.3 metres (See Chart 1, I10) | 48°39'55.0"N 123°18'00.9"W <i>DFO(6205228-03)</i> |
| Delete | depth of 4.4 metres (See Chart 1, I10) | 48°40'05.7"N 123°17'59.6"W <i>DFO(6205228-04)</i> |
| Add | depth of 3.3 metres (See Chart 1, I10) | 48°40'06.1"N 123°18'01.7"W <i>DFO(6205228-05)</i> |
| Add | depth of 1.2 metres (See Chart 1, I10) | 48°39'52.0"N 123°16'59.6"W <i>DFO(6205228-06)</i> |
| Add | depth of 1 metre (See Chart 1, I10) | 48°39'50.1"N 123°16'55.7"W <i>DFO(6205228-07)</i> |
| Add | rock which covers and uncovers with drying height of 0.2 metres (See Chart 1, K11) | 48°40'08.9"N 123°18'04.9"W <i>DFO(6205228-08)</i> |
| Delete | depth of 1.3 metres (See Chart 1, I10) | 48°40'55.2"N 123°23'44.2"W <i>DFO(6205232-04)</i> |

| | | |
|--------|---|--|
| Add | depth of 1.1 metres (See Chart 1, I10) | 48°40'55.1"N 123°23'44.0"W <i>DFO(6205232-05)</i> |
| Delete | depth of 1.8 metres (See Chart 1, I10) | 48°41'13.6"N 123°23'13.8"W <i>DFO(6205232-08)</i> |
| Add | depth of 0.5 metres (See Chart 1, I10) | 48°41'13.5"N 123°23'13.9"W <i>DFO(6205232-09)</i> |
| Delete | depth of 1.8 metres (See Chart 1, I10) | 48°41'13.4"N 123°23'26.9"W <i>DFO(6205232-10)</i> |
| Add | depth of 0.8 metres (See Chart 1, I10) | 48°41'12.9"N 123°23'26.9"W <i>DFO(6205232-11)</i> |
| Delete | depth of 1 metre (See Chart 1, I10) | 48°41'06.4"N 123°23'53.6"W <i>DFO(6205232-12)</i> |
| Add | depth of 0.8 metres (See Chart 1, I10) | 48°41'06.3"N 123°23'53.9"W <i>DFO(6205232-13)</i> |
| Delete | depth of 1.9 metres (See Chart 1, I10) | 48°40'53.2"N 123°23'25.1"W <i>DFO(6205232-14)</i> |
| Add | depth of 1.4 metres (See Chart 1, I10) | 48°40'53.2"N 123°23'25.3"W <i>DFO(6205232-15)</i> |
| Delete | depth of 3 metres (See Chart 1, I10) | 48°41'11.5"N 123°23'09.6"W <i>DFO(6205232-16)</i> |
| Add | depth of 2.3 metres (See Chart 1, I10) | 48°41'11.3"N 123°23'09.9"W <i>DFO(6205232-17)</i> |
| Delete | depth of 1.2 metres (See Chart 1, I10) | 48°42'37.3"N 123°24'42.1"W <i>DFO(6205232-18)</i> |
| Add | depth of 0.2 metres (See Chart 1, I10) | 48°42'36.9"N 123°24'42.8"W <i>DFO(6205232-19)</i> |
| Delete | depth of 1 metre (See Chart 1, I10) | 48°42'00.7"N 123°23'07.9"W <i>DFO(6205232-20)</i> |
| Add | depth of 0.2 metres (See Chart 1, I10) | 48°42'00.7"N 123°23'08.1"W <i>DFO(6205232-21)</i> |

| | | |
|--------|---|--|
| Add | depth of 0.8 metres (See Chart 1, I10) | 48°41'58.3"N 123°25'13.1"W <i>DFO(6205232-22)</i> |
| Delete | depth of 1.2 metres (See Chart 1, I10) | 48°42'32.0"N 123°25'17.5"W <i>DFO(6205232-23)</i> |
| Add | depth of 0.9 metres (See Chart 1, I10) | 48°42'31.3"N 123°25'18.1"W <i>DFO(6205232-24)</i> |
| Delete | depth of 2.1 metres (See Chart 1, I10) | 48°42'18.5"N 123°26'06.6"W <i>DFO(6205232-25)</i> |
| Add | depth of 1.2 metres (See Chart 1, I10) | 48°42'17.6"N 123°26'06.0"W <i>DFO(6205232-26)</i> |
| Add | depth of 1.4 metres (See Chart 1, I10) | 48°42'28.9"N 123°24'35.9"W <i>DFO(6205232-27)</i> |
| Add | depth of 1.4 metres (See Chart 1, I10) | 48°42'19.7"N 123°26'06.8"W <i>DFO(6205232-28)</i> |
| Delete | depth of 1.9 metres (See Chart 1, I10) | 48°42'06.7"N 123°23'56.4"W <i>DFO(6205232-29)</i> |
| Add | depth of 1.4 metres (See Chart 1, I10) | 48°42'06.6"N 123°23'56.3"W <i>DFO(6205232-30)</i> |
| Add | depth of 1.4 metres (See Chart 1, I10) | 48°41'54.1"N 123°24'07.8"W <i>DFO(6205232-31)</i> |
| Add | depth of 1.6 metres (See Chart 1, I10) | 48°41'57.2"N 123°25'11.8"W <i>DFO(6205232-32)</i> |
| Delete | depth of 2.4 metres (See Chart 1, I10) | 48°41'54.0"N 123°25'11.4"W <i>DFO(6205232-33)</i> |
| Add | depth of 1.8 metres (See Chart 1, I10) | 48°41'54.6"N 123°25'09.9"W <i>DFO(6205232-34)</i> |
| Add | depth of 1.8 metres (See Chart 1, I10) | 48°42'21.7"N 123°25'31.5"W <i>DFO(6205232-35)</i> |
| Add | depth of 1.8 metres (See Chart 1, I10) | 48°41'54.3"N 123°23'09.3"W <i>DFO(6205232-36)</i> |

| | | |
|-------------|---|--|
| Delete | rock awash at chart datum (See Chart 1, K12) | 48°42'20.8"N 123°24'23.4"W <i>DFO(6205232-37)</i> |
| Add | rock which covers and uncovers with drying height of 0.3 metres (See Chart 1, K11) | 48°42'20.5"N 123°24'22.7"W <i>DFO(6205232-38)</i> |
| Delete | rock awash at chart datum (See Chart 1, K12) | 48°42'17.2"N 123°24'25.6"W <i>DFO(6205232-39)</i> |
| Add | rock which covers and uncovers with drying height of 0.1 metres (See Chart 1, K11) | 48°42'17.2"N 123°24'25.5"W <i>DFO(6205232-40)</i> |
| Delete | depth of 5.7 metres (See Chart 1, I10) | 48°42'07.7"N 123°23'20.6"W <i>DFO(6205232-41)</i> |
| Add | rock which covers and uncovers with drying height of 0.3 metres (See Chart 1, K11) | 48°42'06.8"N 123°23'21.1"W <i>DFO(6205232-42)</i> |
| Delete | depth of 2.4 metres (See Chart 1, I10) | 48°42'22.3"N 123°26'03.3"W <i>DFO(6205232-43)</i> |
| Add | rock which covers and uncovers with drying height of 0.8 metres (See Chart 1, K11) | 48°42'22.6"N 123°26'04.6"W <i>DFO(6205232-44)</i> |
| 11-JUL-2025 | | LNM/D. 04-JUL-2025 |
| Add | submarine cable (See Chart 1, L30.1) | joining 48°44'28.0"N 123°22'56.2"W 48°44'21.2"N 123°23'06.0"W 48°43'57.3"N 123°23'49.0"W 48°43'49.5"N 123°24'11.5"W 48°43'48.2"N 123°24'28.0"W 48°44'10.7"N 123°25'06.1"W and 48°44'28.0"N 123°25'31.7"W <i>DFO(6205237-24)</i> |
| Add | submarine cable (See Chart 1, L30.1) | joining 48°44'10.7"N 123°25'06.1"W 48°44'01.0"N 123°25'00.4"W 48°42'55.1"N 123°23'59.4"W 48°42'08.2"N 123°22'17.2"W 48°41'07.6"N 123°21'32.5"W 48°40'49.5"N 123°21'33.6"W 48°40'33.5"N 123°22'13.1"W 48°40'34.0"N 123°22'26.0"W 48°40'29.1"N 123°22'59.2"W 48°40'33.3"N 123°23'42.2"W 48°40'34.4"N 123°23'45.5"W and 48°40'33.8"N 123°23'47.6"W <i>DFO(6205237-25)</i> |

| | | |
|-----|---|---|
| Add | submarine cable (See Chart 1, L30.1) | joining 48°44'10.5"N 123°25'05.8"W 48°43'52.8"N 123°25'13.3"W 48°43'47.0"N 123°25'20.1"W 48°43'40.7"N 123°25'22.9"W 48°43'11.8"N 123°26'15.8"W 48°43'07.7"N 123°26'51.0"W and 48°42'54.6"N 123°27'43.0"W DFO(6205237-26) |
|-----|---|---|

3479 - Iroquois Passage and/et John Passage - New Chart - 18-MAY-2007 - NAD 1983

04-JUL-2025

LNMD. 14-FEB-2025

| | | |
|-------|---|---|
| Affix | patch Download Patch - https://www.notmar.gc.ca/chsftp/patches/3479_6205232_1_202506051029.pdf | 48°41'00.0"N 123°24'00.0"W DFO(6205232-01) |
|-------|---|---|

11-JUL-2025

LNMD. 04-JUL-2025

| | | |
|-----|---|---|
| Add | submarine cable (See Chart 1, L30.1) | joining 48°40'30.0"N 123°23'12.4"W 48°40'33.1"N 123°23'35.6"W 48°40'33.4"N 123°23'43.1"W 48°40'34.5"N 123°23'45.2"W and 48°40'33.8"N 123°23'47.6"W DFO(6205237-28) |
|-----|---|---|

3479 - Tsehum Harbour - New Chart - 18-MAY-2007 - NAD 1983

04-JUL-2025

LNMD. 14-FEB-2025

| | | |
|--------|---|---|
| Delete | depth of 0.9 metres (See Chart 1, I10) | 48°40'54.4"N 123°23'47.8"W DFO(6205232-02) |
|--------|---|---|

| | | |
|-----|---|---|
| Add | depth of 0.5 metres (See Chart 1, I10) | 48°40'54.3"N 123°23'47.8"W DFO(6205232-03) |
|-----|---|---|

| | | |
|--------|---|---|
| Delete | depth of 1.3 metres (See Chart 1, I10) | 48°40'55.2"N 123°23'44.2"W DFO(6205232-04) |
|--------|---|---|

| | | |
|-----|---|---|
| Add | depth of 1.1 metres (See Chart 1, I10) | 48°40'55.1"N 123°23'44.0"W DFO(6205232-05) |
|-----|---|---|

| | | |
|--------|---|---|
| Delete | depth of 1.7 metres (See Chart 1, I10) | 48°40'54.2"N 123°23'42.5"W DFO(6205232-06) |
|--------|---|---|

| | | |
|-----|---|---|
| Add | depth of 1.2 metres (See Chart 1, I10) | 48°40'54.3"N 123°23'42.7"W DFO(6205232-07) |
|-----|---|---|

11-JUL-2025

LNMD. 04-JUL-2025

| | | |
|-----|---|---|
| Add | submarine cable (See Chart 1, L30.1) | joining 48°40'33.1"N 123°23'36.6"W 48°40'33.5"N 123°23'42.8"W 48°40'34.5"N 123°23'45.2"W and 48°40'33.9"N 123°23'47.6"W DFO(6205237-27) |
|-----|---|---|

3493 - Vancouver Harbour Western Portion/Partie Ouest - New Edition - 15-NOV-2019 - World Geodetic System 1984

25-JUL-2025

LNMD. 11-APR-2025

| | | |
|-------|--|----------------------------|
| Affix | patch | 49°18'16.0"N 123°03'00.0"W |
| | Download Patch - https://www.notmar.gc.ca/chsftp/patches/3493_6205245_1_202506241548.pdf | |
| | | DFO(6205245-01) |

3515 - Knight Inlet - New Chart - 18-JAN-1991 - NAD 1983

11-JUL-2025

LNMD. 10-JAN-2025

| | | |
|--------|---|----------------------------|
| Delete | depth of 3 metres (See Chart 1, I10) | 50°45'15.9"N 126°36'47.5"W |
| | | DFO(6205225-01) |

| | | |
|-----|---|----------------------------|
| Add | depth of 2.8 metres (See Chart 1, I10) | 50°45'15.8"N 126°36'48.8"W |
| | | DFO(6205225-02) |

3546 - Broughton Strait - New Edition - 15-APR-2005 - NAD 1983

11-JUL-2025

LNMD. 06-JUN-2025

| | | |
|--------|---|----------------------------|
| Delete | depth of 2.7 metres (See Chart 1, I10) | 50°44'29.6"N 126°35'57.6"W |
| | | DFO(6205225-03) |

| | | |
|-----|---|----------------------------|
| Add | depth of 2.2 metres (See Chart 1, I10) | 50°44'30.2"N 126°35'59.7"W |
| | | DFO(6205225-04) |

| | | |
|-----|---|----------------------------|
| Add | depth of 0.3 metres (See Chart 1, I10) | 50°44'16.2"N 126°33'59.0"W |
| | | DFO(6205233-01) |

| | | |
|--------|---|----------------------------|
| Delete | depth of 2.4 metres (See Chart 1, I10) | 50°43'23.6"N 126°37'04.5"W |
| | | DFO(6205233-02) |

| | | |
|-----|---|----------------------------|
| Add | depth of 0.5 metres (See Chart 1, I10) | 50°43'23.7"N 126°37'03.3"W |
| | | DFO(6205233-03) |

| | | |
|--------|---|----------------------------|
| Delete | depth of 4 metres (See Chart 1, I10) | 50°43'10.9"N 126°36'07.5"W |
| | | DFO(6205233-04) |

| | | |
|-----|---|----------------------------|
| Add | depth of 2.8 metres (See Chart 1, I10) | 50°43'10.9"N 126°36'10.0"W |
| | | DFO(6205233-05) |

| | | |
|-----|---|----------------------------|
| Add | depth of 1.6 metres (See Chart 1, I10) | 50°43'00.3"N 126°35'56.3"W |
| | | DFO(6205233-06) |

| | | |
|-----|---|----------------------------|
| Add | depth of 0.4 metres (See Chart 1, I10) | 50°42'32.0"N 126°36'40.5"W |
| | | DFO(6205233-07) |

| | | |
|-----|---|----------------------------|
| Add | depth of 1.2 metres (See Chart 1, I10) | 50°43'02.9"N 126°37'08.3"W |
| | | DFO(6205233-08) |

| | | |
|--------|---|--|
| Delete | underwater rock of unknown depth, dangerous to surface navigation (See Chart 1, K13) | 50°42'55.6"N 126°36'08.6"W <i>DFO(6205233-09)</i> |
| Add | rock which covers and uncovers with drying height of 0.2 metres (See Chart 1, K11) | 50°42'56.6"N 126°36'08.8"W <i>DFO(6205233-10)</i> |
| Delete | depth of 2.4 metres (See Chart 1, I10) | 50°42'47.2"N 126°36'20.9"W <i>DFO(6205233-11)</i> |
| Add | rock which covers and uncovers with drying height of 0.1 metres (See Chart 1, K11) | 50°42'46.6"N 126°36'22.5"W <i>DFO(6205233-12)</i> |
| Add | depth of 2 metres (See Chart 1, I10) | 50°43'40.9"N 126°42'53.1"W <i>DFO(6205239-01)</i> |
| Delete | depth of 4.3 metres (See Chart 1, I10) | 50°43'32.6"N 126°43'20.4"W <i>DFO(6205239-03)</i> |
| Add | depth of 2.8 metres (See Chart 1, I10) | 50°43'33.5"N 126°43'22.0"W <i>DFO(6205239-04)</i> |
| Add | rock which covers and uncovers with drying height of 0.4 metres (See Chart 1, K11) | 50°43'49.1"N 126°42'05.7"W <i>DFO(6205239-05)</i> |
| Add | rock which covers and uncovers with drying height of 1 metre (See Chart 1, K11) | 50°43'18.7"N 126°41'08.7"W <i>DFO(6205239-06)</i> |
| Add | depth of 1.4 metres (See Chart 1, I10) | 50°43'22.1"N 126°42'23.5"W <i>DFO(6205239-07)</i> |
| Delete | depth of 4 metres (See Chart 1, I10) | 50°42'44.4"N 126°42'25.5"W <i>DFO(6205239-08)</i> |
| Add | depth of 2.3 metres (See Chart 1, I10) | 50°42'43.9"N 126°42'25.5"W <i>DFO(6205239-09)</i> |
| Delete | underwater rock of unknown depth, dangerous to surface navigation (See Chart 1, K13) | 50°42'35.0"N 126°42'14.5"W <i>DFO(6205239-10)</i> |
| Add | depth of 0.3 metres (See Chart 1, I10) | 50°42'34.7"N 126°42'15.7"W <i>DFO(6205239-11)</i> |
| Add | depth of 0.9 metres (See Chart 1, I10) | 50°42'44.5"N 126°41'58.7"W <i>DFO(6205239-12)</i> |

| | | |
|--------|---|--|
| Delete | depth of 3 metres (See Chart 1, I10) | 50°42'34.8"N 126°42'21.9"W <i>DFO(6205239-13)</i> |
| Add | depth of 2.3 metres (See Chart 1, I10) | 50°42'34.9"N 126°42'22.0"W <i>DFO(6205239-14)</i> |
| Delete | underwater rock of unknown depth, dangerous to surface navigation (See Chart 1, K13) | 50°42'20.4"N 126°42'27.6"W <i>DFO(6205239-15)</i> |
| Delete | underwater rock of unknown depth, dangerous to surface navigation (See Chart 1, K13) | 50°42'19.8"N 126°42'29.7"W <i>DFO(6205239-16)</i> |
| Add | rock awash at chart datum (See Chart 1, K12) | 50°42'19.6"N 126°42'28.3"W <i>DFO(6205239-17)</i> |
| Delete | rock which covers and uncovers with drying height of 1.2 metres (See Chart 1, K11) | 50°43'16.5"N 126°40'47.9"W <i>DFO(6205239-18)</i> |
| Add | rock which covers and uncovers with drying height of 1.2 metres (See Chart 1, K11) | 50°43'15.4"N 126°40'49.5"W <i>DFO(6205239-19)</i> |

3547 - Queen Charlotte Strait Eastern Portion/Partie Est - New Chart - 28-APR-1989 - NAD 1983

11-JUL-2025

LNMD. 06-DEC-2024

| | | |
|--------|---|--|
| Delete | depth of 3 metres (See Chart 1, I10) | 50°45'15.5"N 126°36'48.0"W <i>DFO(6205225-01)</i> |
| Add | depth of 2.8 metres (See Chart 1, I10) | 50°45'15.8"N 126°36'48.8"W <i>DFO(6205225-02)</i> |
| Delete | depth of 2.7 metres (See Chart 1, I10) | 50°44'29.6"N 126°35'57.6"W <i>DFO(6205225-03)</i> |
| Add | depth of 2.2 metres (See Chart 1, I10) | 50°44'30.2"N 126°35'59.7"W <i>DFO(6205225-04)</i> |
| Add | underwater rock of unknown depth, dangerous to surface navigation (See Chart 1, K13) | 50°45'37.0"N 126°36'04.4"W <i>DFO(6205225-05)</i> |
| Add | depth of 2 metres (See Chart 1, I10) | 50°43'40.9"N 126°42'53.1"W <i>DFO(6205239-01)</i> |
| Delete | depth of 4.3 metres (See Chart 1, I10) | 50°43'32.6"N 126°43'20.4"W <i>DFO(6205239-03)</i> |

| | | |
|-----|---|----------------------------|
| Add | depth of 2.8 metres (See Chart 1, I10) | 50°43'33.5"N 126°43'22.0"W |
| | | <i>DFO(6205239-04)</i> |

| | | |
|-----|---|----------------------------|
| Add | rock which covers and uncovers with drying height of 0.4 metres (See Chart 1, K11) | 50°43'49.1"N 126°42'05.7"W |
| | | <i>DFO(6205239-05)</i> |

3554 - Squirrel Cove - New Chart - 06-JAN-2017 - World Geodetic System 1984

11-JUL-2025

LNMD. 07-MAR-2025

| | | |
|-----|--|--|
| Add | floating breakwater Bkw (See Chart 1, F4.1) | between 50°07'54.2"N 124°55'25.4"W and 50°07'53.5"N 124°55'23.6"W |
| | | <i>DFO(6205217-01)</i> |

| | | |
|-----|-------------------------------|--|
| Add | pontoon (See Chart 1, F16) | joining 50°07'52.8"N 124°55'24.8"W 50°07'53.2"N 124°55'25.9"W and 50°07'53.0"N 124°55'26.1"W |
| | | <i>DFO(6205217-02)</i> |

| | | |
|-----|-------------------------------|--|
| Add | pontoon (See Chart 1, F16) | between 50°07'53.0"N 124°55'25.4"W and 50°07'52.6"N 124°55'25.8"W |
| | | <i>DFO(6205217-03)</i> |

3602 - Approaches to/Approches à Juan de Fuca Strait - New Edition - 29-NOV-2002 - NAD 1983

25-JUL-2025

LNMD. 14-MAR-2025

| | | |
|-------|--|-----------------------------------|
| Amend | note Adjoining Chart/Carte adjacente 3001 to read Adjoining Chart/Carte 3011 (See Chart 1, A20) | outside west border at 48°33'00"N |
| | | <i>DFO(6205254-03)</i> |

| | | |
|--------|---|-------------------------------------|
| Delete | note Adjoining Chart/Carte adjacente USA/É-UA 18480 (See Chart 1, A20) | outside south border at 125°40'00"W |
| | | <i>DFO(6205254-04)</i> |

3603 - Ucluelet Inlet to/à Nootka Sound - New Edition - 23-OCT-1981 - NAD 1927

25-JUL-2025

LNMD. 21-MAR-2025

| | | |
|-------|--|-----------------------------------|
| Amend | note Adjoining Chart/Carte adjacente 3001 to read Adjoining Chart/Carte adjacente 3011 (See Chart 1, A20) | outside west border at 49°13'00"N |
| | | <i>DFO(6205254-02)</i> |

3604 - Nootka Sound to/à Quatsino Sound - New Edition - 06-NOV-1987 - NAD 1927

25-JUL-2025

LNMD. 05-JUL-2024

| | | |
|-------|--|-----------------------------------|
| Amend | note Adjoining Chart/Carte adjacente 3001 to read Adjoining Chart/Carte adjacente 3011 (See Chart 1, A20) | outside west border at 50°03'00"N |
| | | <i>DFO(6205254-05)</i> |

3605 - Quatsino Sound to/à Queen Charlotte Strait - New Edition - 06-MAR-1998 - NAD 1983

25-JUL-2025

LNMD. 17-NOV-2023

| | | |
|-------|--|-----------------------------------|
| Amend | note Adjoining Chart/Carte adjacente 3001 to read Adjoining Chart/Carte adjacente 3011 (See Chart 1, A20) | outside west border at 50°35'00"N |
| | | <i>DFO(6205254-06)</i> |

| | | |
|-------|--|-------------------------------------|
| Amend | note Adjoining Chart/Carte adjacente 3001 to read Adjoining Chart/Carte adjacente 3011 (See Chart 1, A20) | outside south border at 129°15'00"W |
| | | DFO(6205254-10) |

3670 - Broken Group - New Edition - 21-OCT-1994 - NAD 1983
11-JUL-2025

LNMD. 20-JUN-2025

| | | |
|--------|---|----------------------------|
| Affix | patch Download Patch - https://www.notmar.gc.ca/chsftp/patches/3670_6205235_1_202506121303.pdf | 48°55'00.0"N 125°20'00.0"W |
| | | DFO(6205235-01) |
| Affix | patch Download Patch - https://www.notmar.gc.ca/chsftp/patches/3670_6205235_2_202506121352.pdf | 48°54'00.0"N 125°16'00.0"W |
| | | DFO(6205235-02) |
| Delete | depth of 1.6 metres (See Chart 1, I10) | 48°55'33.4"N 125°20'28.5"W |
| | | DFO(6205235-03) |
| Add | rock which covers and uncovers with drying height of 0.9 metres (See Chart 1, K11) | 48°55'34.0"N 125°20'28.0"W |
| | | DFO(6205235-04) |
| Add | rock which covers and uncovers with drying height of 2.3 metres (See Chart 1, K11) | 48°55'29.0"N 125°20'35.2"W |
| | | DFO(6205235-05) |
| Add | rock which covers and uncovers with drying height of 1.8 metres (See Chart 1, K11) | 48°55'24.9"N 125°20'39.4"W |
| | | DFO(6205235-06) |

3671 - Barkley Sound - New Edition - 04-NOV-2005 - NAD 1983
11-JUL-2025

LNMD. 11-APR-2025

| | | |
|--------|---|----------------------------|
| Affix | patch Download Patch - https://www.notmar.gc.ca/chsftp/patches/3671_6205235_7_202506121307.pdf | 48°55'00.0"N 125°18'00.0"W |
| | | DFO(6205235-07) |
| Affix | patch Download Patch - https://www.notmar.gc.ca/chsftp/patches/3671_6205238_1_202506121313.pdf | 48°48'00.0"N 125°10'00.0"W |
| | | DFO(6205238-01) |
| Add | depth of 2.9 metres (See Chart 1, I10) | 48°48'58.6"N 125°10'40.2"W |
| | | DFO(6205238-02) |
| Add | depth of 1.2 metres (See Chart 1, I10) | 48°49'07.4"N 125°10'01.4"W |
| | | DFO(6205238-03) |
| Delete | depth of 4.6 metres (See Chart 1, I10) | 48°48'52.1"N 125°10'36.0"W |
| | | DFO(6205238-04) |
| Add | depth of 1.4 metres (See Chart 1, I10) | 48°48'52.9"N 125°10'35.2"W |
| | | DFO(6205238-05) |
| Add | rock which covers and uncovers with drying height of 0.2 metres (See Chart 1, K11) | 48°49'19.5"N 125°09'45.5"W |
| | | DFO(6205238-06) |

3744 - Queen Charlotte Sound - New Edition - 20-MAY-1988 - NAD 1927

25-JUL-2025

LNMD. 28-FEB-2025

Amend note Adjoining Chart/Carte adjacente 3001 to read Adjoining Chart/Carte outside south border at 128°48'00"W adjacente 3011
(See Chart 1, A20)

DFO(6205254-07)

3890 - Approaches to/Approches à Skidegate Inlet - New Chart - 14-MAR-1986 - NAD 1927

11-JUL-2025

LNMD. 04-APR-2025

Add depth of 1.1 metres
(See Chart 1, I10) 53°11'20.7"N 132°05'45.4"W

DFO(6205226-02)

Add depth of 6.8 metres
(See Chart 1, I10) 53°11'25.3"N 132°04'07.2"W

DFO(6205226-03)

Add depth of 2.4 metres
(See Chart 1, I10) 53°11'09.4"N 132°01'40.2"W

DFO(6205226-04)

Add depth of 2.3 metres
(See Chart 1, I10) 53°10'48.6"N 132°05'16.5"W

DFO(6205226-05)

3890 - Queen Charlotte - New Chart - 14-MAR-1986 - NAD 1927

11-JUL-2025

LNMD. 04-APR-2025

Replace QUEEN CHARLOTTE with DAAJING GIIDS 53°15'33.3"N 132°03'30.0"W

DFO(6205224-01)

3891 - Skidegate Channel - New Edition - 26-OCT-2018 - World Geodetic System 1984

11-JUL-2025

LNMD. 11-APR-2025

Delete depth of 5.6 metres
(See Chart 1, I10) 53°11'19.7"N 132°05'50.9"W

DFO(6205226-01)

Add depth of 1.1 metres
(See Chart 1, I10) 53°11'19.8"N 132°05'51.6"W

DFO(6205226-02)

Add depth of 2.3 metres
(See Chart 1, I10) 53°10'47.7"N 132°05'22.7"W

DFO(6205226-05)

6022 - Lake Rosseau and/et Lake Joseph - Sheet/Feuille 1 - New Edition - 04-MAR-2005 - NAD 1983

18-JUL-2025

LNMD. 16-FEB-2024

Add green port hand spar buoy, marked P3/1
(See Chart 1, Qc) 45°08'09.0"N 079°40'36.0"W

(D2025020) DFO(6605526-01)

6022 - Lake Rosseau and/et Lake Joseph - Sheet/Feuille 2 - New Edition - 04-MAR-2005 - NAD 1983

18-JUL-2025

LNMD. 16-FEB-2024

Add green port hand spar buoy, marked P3/1
(See Chart 1, Qc) 45°08'09.0"N 079°40'36.0"W

(D2025020) DFO(6605526-01)

6241 - Berens River to/à Nelson River - Sheet/Feuille 1 - New Edition - 27-MAY-2005 - Unknown

11-JUL-2025

LNMD. 09-MAY-2025

Amend green port hand spar buoy CS3 to read green port hand lighted spar 53°08'36.0"N 098°50'00.0"W
 buoy Fl G, marked CS3
 (See Chart 1, Qc)

(P2025017) LL(1613.5) DFO(6605525-01)

7010 - Davis Strait and/et Baffin Bay - New Edition - 12-JAN-1979 - Unknown

11-JUL-2025

LNMD. 06-JUN-2025

Add underwater rock of unknown depth, dangerous to surface navigation with 59°52'34.0"N 063°58'31.0"W
 legend 'Rep (2024)'
 (See Chart 1, K13, I3.2)

DFO(6605523-01)

7011 - Hudson Strait/Détroit D'Hudson to/à Groenland - New Edition - 02-SEP-1983 - Unknown

11-JUL-2025

LNMD. 02-MAY-2025

Add underwater rock of unknown depth, dangerous to surface navigation with 59°52'34.0"N 063°58'31.0"W
 legend 'Rep (2024)'
 (See Chart 1, K13, I3.2)

DFO(6605523-01)

Section 3: Radio Aids to Marine Navigation Corrections

*714/25 Radio Aids to Marine Navigation 2025 (Atlantic, St. Lawrence, Great Lakes, Lake Winnipeg, Arctic and Pacific)

Page 4-71

AMEND AS FOLLOWS:

4.3.6 Sailing Trip Plan Service

All small craft operators, including those making day trips, are encouraged to file a Trip Plan with a responsible person. This person should be instructed to call the Joint Rescue Coordination Centre (JRCC) or Maritime Rescue Sub-Centre (MRSC) if the vessel becomes overdue. The telephone number **5** can be found in Section 4.3.7 of this publication and should be included with the Trip Plan.

Page 5-17

5.9.1 Marine Weather Forecast Program

AMEND AS FOLLOWS:

Table 5-24 - Northern Canada: Production Schedule - NAVTEX Format

| MCTS Centre | NAVTEX Transmitter | Header | Issue Time |
|---------------|--------------------|----------------------------|---|
| Iqaluit / VFF | Iqaluit | FQCN36 CWNT FICN36 CWIS | 05:30, 17:30 EDT / EST 07:00, 19:00 06:30, 18:30 UTC |

Page 5-51

AMEND AS FOLLOWS:

5.15.1 Ice Forecasts

Table 5-64- Ice Bulletins: Production Schedule - NAVTEX Format

| MCTS Centre | NAVTEX Transmitter | Header | Issue Time |
|---------------------|--------------------|-------------|---|
| Placentia / VCP | Robin Hood Bay | FICN33 CWIS | 17:50 (W), 21:50 (S) UTC |
| Sydney / VCO | Port Caledonia | FICN34 CWIS | 22:10 UTC |
| Labrador / VOK | Cartwright | FICN35 CWIS | 23:20 UTC |
| Iqaluit / VFF | Iqaluit | FICN36 CWIS | 07:00, 19:00 06:30, 18:30 UTC |
| Les Escoumins / VCF | Moisie | FICN37 CWIS | 14:50 UTC |
| Prescott / VBR | Ferndale | FICN38 CWIS | 00:40, 12:40 UTC |
| Sarnia / VBE | Pass Lake | FICN39 CWIS | 06:00, 18:00 UTC |

Section 4: Canadian Sailing Directions Corrections

The following **Canadian Sailing Directions** volumes have recently been updated on the [Canadian Hydrographic Service website](#).

| No. | Title |
|-----------------------|---|
| Atlantic Coast | |
| ATL 103 | Newfoundland, Southwest Coast |
| ATL 104 | Cape North to Cape Canso (including Bras d'Or Lake) |
| Central Canada | |
| CEN 300 | General Information, Great Lakes |
| CEN 306 | Georgian Bay |

Each volume includes a section entitled “Record of Changes” which lists all updates that are incorporated during the current calendar year.

Section 5: List of Lights, Buoys and Fog Signals Corrections

The amendments are highlighted and deletions are crossed out. For general and region-specific information on the List of Lights, click on the following links: [Newfoundland and Labrador Coast](#), [Atlantic Coast](#), [Inland Waters](#) and [Pacific Coast](#).

| No. | Name | Position ----- Latitude N. Longitude W. | Light Characteristics | Focal Height in m. above water | Nomi- nal Range | Description ----- Height in meters above ground | Remarks ----- Fog Signals |
|-----|------|--|--------------------------|--|-----------------------|--|---------------------------------|
|-----|------|--|--------------------------|--|-----------------------|--|---------------------------------|

PACIFIC COAST

FRASER RIVER – SOUTH ARM (LL 310 – 371)

| | | | | | | | | | |
|------------------|-----------------------------|---|---|---|-------|------|----|---|-------------------------------|
| 363 G5413.39 | Annieville Channel range | On S. bank of river. 49 09 50.3 122 55 50.9 | F | Y | | 27.4 | 15 | Square skeleton tower. | Operates 24 h. Year round. |
| 364 G5413.391 | | 198° 37' 209.3 m from front. | F | Y | | 67.8 | 15 | Red and white Square skeleton tower. | Operates 24 h. Year round. |

Chart:3490
Edn 07/25 (P25-028, 029)

BROUGHTON STRAIT (LL 545 – 553.5)

| | | | | | | | | | |
|----------------|------------------------------|--|----|---|----|-----|---|--|--|
| 549.2 G5623 | Yellow Bluff Sector Light | On shoal. 50 35 13.1 126 57 03.5 | Fl | W | 4s | 7.1 | 5 | White square tower with red bands at top and bottom. | Red 287° 49' to 302° 02'; white 302° 03' through N., E., S. and W. to 287° 48'. Radar reflector. Year round. |
|----------------|------------------------------|--|----|---|----|-----|---|--|--|

Chart:3546
Edn 07/25 (P25-030)

HAIDA GWAIL (LL 768.6 – 812)

| | | | | | | | | | |
|----------------|----------------------------|---|-------|-------------|-------|------|---|---|---|
| 775 G5834 | Low Island | On the NW. end of the northernmost island. 52 54 42.9 131 32 24.3 | Fl | W | 4s | 17.0 | 5 | White square tower. | Obscured from 311° to 339°. Year round. |
| 776 G5834.2 | Haswell Island | S. side of island. 52 51 37.6 131 41 12.4 | Fl(3) | W | 12s | 14.5 | 3 | White square tower. | Flash 0.5 s; eclipse 2 s; flash 0.5 s; eclipse 2 s; flash 0.5 s; eclipse 6.5 s. Year round. |
| 779 G5836.2 | McCoy Cove Sector Light | E. side of cove. 53 02 05.3 131 39 18.6 | F | R W G | | 5.3 | 5 | Square skeleton tower, red and white rectangular daymark, black vertical stripe. | Green from 084° to 091°; white from 091° to 092°; red from 092° to 100°. White sector indicates the preferred channel. Year round. |
| 780 G5836 | Haans Islet | 53 02 18.1 131 41 19.1 | Fl(3) | W | 12s | 7.2 | 5 | White square skeleton tower. | Flash 0.5 s; eclipse 2 s; flash 0.5 s; eclipse 2 s; flash 0.5 s; eclipse 6.5 s. Year round. |

Chart:3807
Edn 07/25 (P25-031)

Chart:3807
Edn 07/25 (P25-032)

Chart:3894
Edn 07/25 (P25-034)

Chart:3894
Edn 07/25 (P25-035)